

E-PRTR Validation Tool

User Manual

September 2012
Version 3.0

VERSION MANAGEMENT

This document was initially written by **Atkins Danmark, GIS & IT** (Arne Jacobsens Allé 17, DK-2300 København S, Tlf.: +45 8233 9000 Fax: +45 8233 9001) and the version 3.0 was updated by **TripleDev**.

Project no.: 1010175		DOCREF: EPRTRUserManual.doc			
Revision	Description	Author	Reviewed by	Approved by	Date
0.b	First draft	HES			2008-10-18
0.c	Updated with comments from COM/EEA	HES			2008-10-21
0.d	Added Principle for validation (section 2.3) and descriptions of deviations from the Guidance Document (Appendix 1)	HES			2008-10-22
0.e	Changed examples of accidentalQuantity and methods	HES			2008-11-03
1	Schema changes to be UN/CEFACT compliant. Description of Conversion Tool	HES			2008-11-28
2	Updated to reflect schema ver 1.1	HES	KTH	KTH	2008-12-05
2.a	Updated to Schema ver 2.0	HES	KTH	KTH	2008-12-10
2.b	Clarified import of data to conversion tool	HES	KTH	KTH	2008-12-19
2.c	Clarified confidentiality of MethodBasisCode for WasteTransfer (section 3.1.8)	HES			2010-09-10
3	Added detailed information about validation rules and examples of QA results.	Enriko Käsper Kaido Laine (TripleDev)			2012-09-14

Table of Contents

1	Introduction and scope	5
1.1	Introduction	5
1.2	Scope	5
2	Part I: The E-PRTR Validation Tool	5
2.1	Computer Requirements	6
2.2	Installation / uninstallation	6
	2.2.1 Installation	6
	2.2.2 Uninstallation	7
2.3	Principle for validation	7
2.4	Using the validation tool	7
	2.4.1 Validation of XML file	7
	2.4.2 Interpreting validation results	9
	2.4.3 Validation summary on top of the validation details	10
	2.4.4 Correction of validation errors	11
	2.4.5 Check for Updates	11
3	Part II: The E-PRTR XML format	11
3.1	XML Schema	11
	3.1.1 Confidential and voluntary data	12
	3.1.2 Number formats	12
	3.1.3 PollutantReleaseAndTransferReport element	12
	3.1.4 FacilityReport elements	14
	3.1.5 Activity elements	17
	3.1.6 PollutantRelease elements	18
	3.1.7 PollutantTransfer elements	20
	3.1.8 WasteTransfer elements	22
	3.1.9 WasteHandlerParty element	23
	3.1.10 MethodUsed elements	25
	3.1.11 CompetentAuthorityParty elements	26
3.2	Validation rules	27
	3.2.1 Mandatory checks	28
	3.2.2 Additional validation	50
	3.2.3 Complementary Validation: Confidentiality	54
	3.2.4 Complementary Validation: Coordinates and NUTS check	58
	3.2.5 Complementary Validation: Facility ID check	61
	3.2.6 Complementary Validation: Outliers	65
	3.2.7 Complementary Validation: use of Hyphens and Zeroes	69
4	Part III: The E-PRTR Conversion Tool	71
4.1	Computer Requirements	71
4.2	Installation / uninstallation	71

4.2.1	Installation	71
4.2.2	Uninstallation	71
4.3	Principle for conversion	72
4.4	Using the E-PRTR Conversion tool	72
4.4.1	Add data to the database	73
4.4.2	Export data to XML	73
4.5	Data structure	74
4.5.1	PollutantReleaseAndTransferReport table	75
4.5.2	FacilityReport table	76
4.5.3	ProductionVolume table	76
4.5.4	Activity table	77
4.5.5	PollutantRelease table	77
4.5.6	PollutantTransfer table	77
4.5.7	WasteTransfer table	78
4.5.8	WasteHandlerParty table	79
4.5.9	PollutantReleaseMethodUsed table	79
4.5.10	PollutantTransferMethodUsed table	80
4.5.11	WasteTransferMethodUsed table	80
4.5.12	CompetentAuthorityParty table	80
5	References	81
6	Further information and Comments	81
7	Appendix 1: E-PRTR XML format compared to Guidance Document	82

1 INTRODUCTION AND SCOPE

1.1 Introduction

The reporting of E-PRTR data to the European Commission is done by uploading the data reports to the Central Data Repository (CDR) of the EEA Reportnet site.

The data reports are uploaded in XML format and must observe the rules described in the Guidance document [1]. This is ensured partly by keeping a specific XML schema, partly by validating the XML files regarding to rules not contained in the schema.

In order for the Member States to validate E-PRTR data prior to upload to the CDR, a validation tool is provided.

The Member State can generate the XML file either directly from the national PRTR or by using a conversion tool provided.

This document can be found at the following address:

<http://www.eionet.europa.eu/schemas/eprtr>

1.2 Scope

Part I of this document describes how to use the E-PRTR Validation tool.

Part II of this document describes the XML schema format to be used when reporting the E-PRTR data and covers validation rules to be checked by Validation tool.

Part III of this document describes the E-PRTR Conversion tool

This document does not describe the process of uploading the E-PRTR data to the CDR which will be provided in a later update.

2 PART I: THE E-PRTR VALIDATION TOOL

The purpose of the E-PRTR Validation tool is to allow the Member States to validate E-PRTR data prior to upload to the CDR.

The validation tool implies that an XML file has already been generated. Thus, it is not possible to generate the XML file through the validation tool. If the XML file can not be generated directly from the national PRTR, the E-PRTR Conversion tool can be used, as described in section 4.

2.1 Computer Requirements

The E-PRTR Validation tool requires Windows XP or newer, 30 MB of free hard disk space and an 800x600 monitor (minimum).

The E-PRTR Validation tool requires Microsoft .NET Framework 3.5 SP1 or higher. If .NET 3.5 SP1 is not already present, it will automatically be installed during the installation process. However the installation program itself requires at least Microsoft .NET Framework 2.0, see section 2.2.

Running The E-PRTR Validation tool requires access to the internet.

2.2 Installation / uninstallation

2.2.1 Installation

The E-PRTR Validation tool is installed through the internet from the URL below:

<http://www.eionet.europa.eu/schemas/eprtr/validationtool>

It should be noticed that the installation will only run from Internet Explorer, not from other browsers (e.g. FireFox).

As described in section 2.1 the installation will automatically include the Microsoft .NET Framework 3.5 SP1, if this is not already present. However, it should be noticed that installation of .NET requires local administrator access.

In order to run the installation program itself at least Microsoft .NET Framework 2.0 must be installed. To determine what versions of the Microsoft .NET Framework is installed have a look in the folder C:\Windows\Microsoft.NET\Framework. Versions of the .NET framework will be in numbered folders.

If you do not already have .NET 2.0 or higher, you are recommended to install the latest version of .NET, which at the time of writing is 3.5 SP1. This is available from the URL below:

<http://www.microsoft.com/downloads/details.aspx?familyid=ab99342f-5d1a-413d-8319-81da479ab0d7>

Each time the E-PRTR Validation tool is started an automatic check for new versions will be performed. If an update is found, but installation is skipped, it can be installed manually later on as described in section 2.4.5.

Running the installation as well as the E-PRTR Validation Tool through a proxy server might cause problems. In this case your administrator must change the network configuration in order to remove the proxy for the following websites:

- <http://www.eionet.europa.eu/schemas/eprtr/validationtool>
- <http://eionet.europa.eu>

2.2.2 Uninstallation

The E-PRTR Validation tool has to be uninstalled from the Control Panel. (Normally it can be opened from the Windows Start menu)

2.3 Principle for validation

The validation of an XML file checks that the XML file is in compliance with the XML schema defined within the XML file. See section 3.1.3 about defining the schema. This ensures that the validation is always based on the current version of the E-PRTR XML schema.

In addition the validation checks that the validation rules described in section 3.2 are kept. The validation rules are automatically downloaded from Reportnet during validation. The collection of the rules is based on the schema defined within the XML file. This ensures that the validations run always correspond to the ones that will run when uploading to the CDR.

The principle described above means that changes in the E-PRTR XML schema or validation rules does not require the E-PRTR Validation tool to be updated.

2.4 Using the validation tool

The E-PRTR Validation tool is started from the start menu (Programs -> The European Commission -> E-PRTR Validation tool).

2.4.1 Validation of XML file

To validate the XML file click the “Check XML file” button (see Figure 1) and select the XML file to be validated. The XML file is assumed to be generated from outside the tool as mentioned earlier.

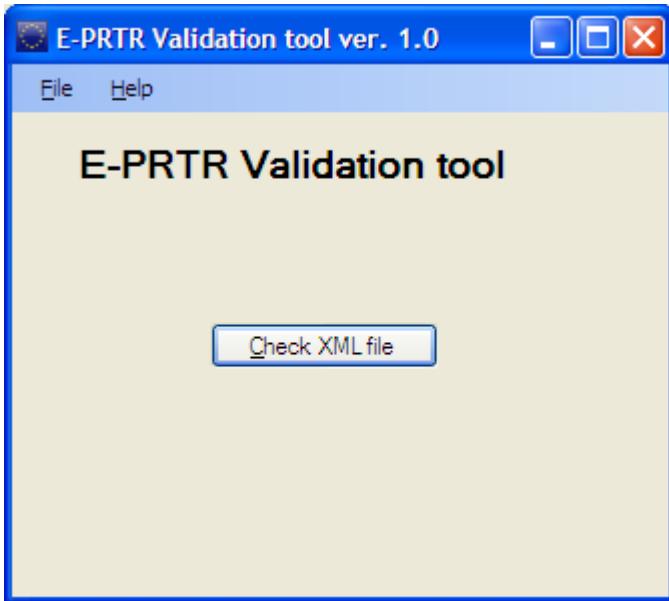


Figure 1 The E-PRTR Validation tool

The main result of the validation is presented as shown in Figure 2.

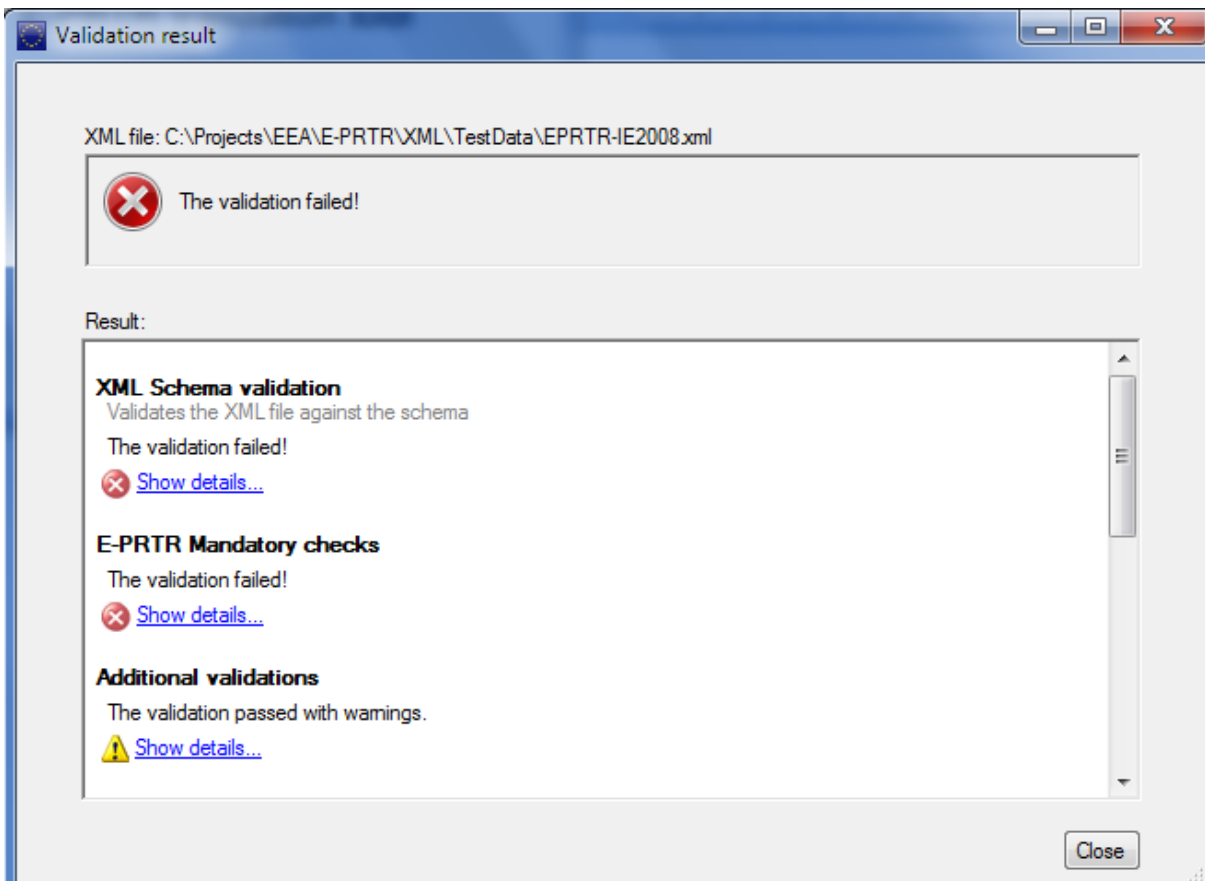





Figure 2 Result of validations

For each of the validations run the result is shown. The detailed reports are marked with the symbols below.

-  The validation was not passed. The detailed report contains information about the validation including the errors found.
-  The validation was passed with warnings. The detailed report contains information about the validation including the warnings.
-  The validation was passed successfully. The detailed report contains additional information about the validation.

The detailed reports can be shown by clicking the “Show details...” link. This will open the report as shown in (See Figure 3).

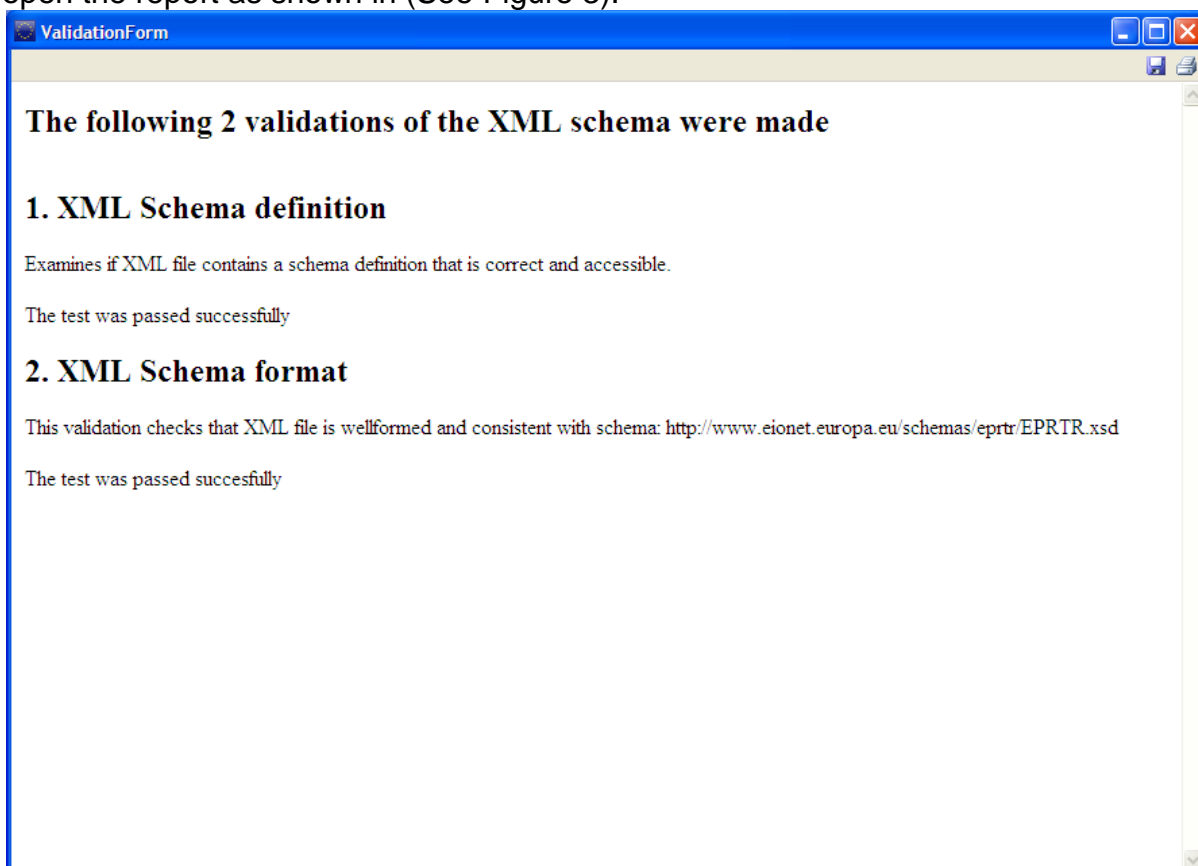


Figure 3 Example of detail report

The result of the validation can be saved and printed from the tool bar in the upper right corner.

2.4.2 Interpreting validation results

The Validation Tool evaluates XML files by the following 3 types of rules:

- XML Schema validation
- Mandatory checks
- Additional and Complementary checks

To be able to successfully report acceptable data the first two checks should not have any errors. **If XML Schema validation or Mandatory checks FAIL, then the data delivery is not acceptable and errors found prevent data being imported to E-PRTR database.** XML Schema validation is part of the Mandatory checks when uploading XML file to the CDR and XML Schema validation could have slightly different messages in CDR level QA. Otherwise the validation results are exactly the same.

Additional and complementary checks evaluate the data by different criteria. These rules raise warnings if quantities below threshold, confidentiality claimed, potential outliers detected, coordinates outside NUTS boundaries or invalid/duplicate Facility IDs discovered. These warnings do not prevent data being imported to E-PRTR database, but their purpose is to draw the attention of the reporter to potential shortcomings to be further checked.

The details about different validation rules can be found in section 3.2.

2.4.3 Validation summary on top of the validation details

All validation results contain the summary of validation rules and the indication of rule results on top of the validation details report. Green OK message in front of the validation rule description means that the validation passed successfully. A number in orange or red box indicates the number of warnings or errors found from the reported data for the given validation rule. Blue bullet point in front of the rule is a information (soft warning) message.

E-PRTR - Complementary Validation - Outliers

The following validations are meant to help the member states to evaluate that the data reported are correct. The validations will not prevent data from being stored in the database. The validation details are shown below. The validations are performed on the reported data values using 3 different methods:

Validation Rule	Result
OK 1. Check previous years top polluters	Validation passed successfully
4 2. Check country total and pollutant thresholds	4 warnings found
17 3. Check country data from previous years	17 errors found

Potential outliers detected

Figure 4 Example of validation summary

2.4.4 Correction of validation errors

If the validation results in errors, these must be corrected before uploading the XML file to Reportnet. **It is very important that the data are corrected in the national PRTR, not just in the XML file.** Otherwise queries in the national PRTR will lead to other results than queries made in the European PRTR.

2.4.5 Check for Updates

A check for updates of the E-PRTR Validation tool can be run from the menu File -> Check for Updates, see Figure 5. If a newer version is available it can be installed.

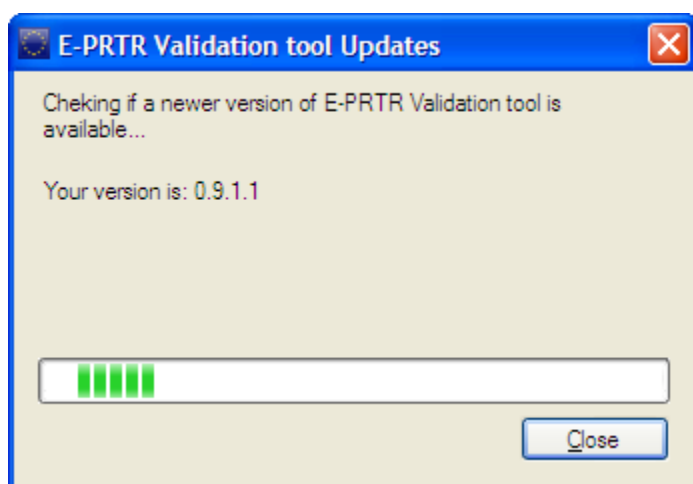


Figure 5 Check for updates

3 PART II: THE E-PRTR XML FORMAT

In the following the E-PRTR XML format and validation rules are described.

3.1 XML Schema

In general an XML schema provides an easily readable description the set of rules to which an XML document must conform in order to be considered 'valid' according to the schema constraints. It defines the XML document in terms of constraints upon what elements and attributes may appear, their relationship to each other, what types of data may be included.

The E-PRTR XML-file contains the complete data set to be reported for a given reporting year. The XML-file must be consistent with the E-PRTR XML schema,. The current version can be found at the URL below:

<http://www.eionet.europa.eu/schemas/eprtr>

In the following paragraphs, the content of the individual elements / attributes of the E-PRTR XML schema are described. While the types of data, the maximum lengths etc. can be found in the schema itself.

3.1.1 Confidential and voluntary data

Companies subject to reporting or competent authorities in the Member States (MS) can decide to classify parts of the mandatory data as confidential. In this case the MS should report that confidentiality is claimed. In addition the specific confidential data should be withheld by the MS according to section 1.2.4 of the E-PRTR Guidance Document [1]. This means that all mandatory data being reported will be considered non-confidential.

If confidentiality is claimed, the reason should be reported as one of the eight exceptions given in Directive 2003/4/EC, Article 4(2). In [1], section 1.2.4 the cases are given for which the different exceptions/confidentiality reasons can be claimed. If the MS needs to elaborate on the reason for confidentiality, this can be done in the remark fields of the relevant element.

In the descriptions of the domain entities below, data that can be withheld due to confidentiality are indicated. If data is withheld, the corresponding element(s) must be left out. Reporting of empty elements is not allowed.

Besides the mandatory data the MS is also asked to report a number of voluntary data. These are indicated in the descriptions of the domain entities below. The MS can protect the voluntary data from being published with a few exceptions (web-site and e-mail address) as described for the individual elements. If voluntary data is not reported, the corresponding element(s) must be left out. Reporting of empty elements is not allowed.

3.1.2 Number formats

For reporting of decimal numbers the decimal symbol must be '.'. Digit grouping is not allowed. Examples of legal values are:

- 0.0123
- 1.55
- 7070
- 123
- 10000

3.1.3 PollutantReleaseAndTransferReport element

The *PollutantReleaseAndTransferReport element* is the root element of the E-PRTR schema. The element must contain a definition of the schema location and the namespace as shown in the example below.

Element	Description	Conf. 1	Vol. 2
ReportingYear	The calendar year for which data on releases of pollutants and off-site transfers must be gathered. Must be in the interval [2007; this year]. Required.		
CountryID	The Member State reporting. The list of legal values identifying the counties correspond to ISO 3166 alpha-2 except for Greece and the United Kingdom as recommended in http://publications.europa.eu/code/pdf/370000en.htm#pays, Revision 8 . The legal codes can be found in the Country code list at the following URL: http://www.eionet.europa.eu/schemas/eptr/listOfValues Required.		
CoordinateSystemID	The coordinate system used in reporting of coordinates of the facilities. Both EPSG:4326 and EPSG:4258 are allowed when reporting coordinates The legal codes can be found in the Coordinate System code list at the following URL: http://www.eionet.europa.eu/schemas/eptr/listOfValues Required		
RemarkText	Textual remark from MS. Will not be published on the web-site.		x
CompetentAuthorityParty	One or more CompetentAuthorityParty elements as described in section 3.1.11		
FacilityReport	One for more FacilityReport elements holding the reported data for the facilities as described in section 3.1.4		

Example of the XML structure of the PollutantReleaseAndTransferReport element

```
<rsm:PollutantReleaseAndTransferReport
xmlns:rsm="urn:eu:com:env:prtr:data:standard:2"
xmlns:xsi="http://www.w3.org/2001/XMLSchema-instance"
xsi:schemaLocation="urn:eu:com:env:prtr:data:standard:2
http://www.eionet.europa.eu/schemas/eptr/PollutantReleaseAndTransferReport_2p0
.xsd">
  <rsm:ReportingYear>2008</rsm:ReportingYear>
  <rsm:CountryID>DE</rsm:CountryID>
  <rsm:CoordinateSystemID>EPSG:4326</rsm:CoordinateSystemID>
  <rsm:RemarkText>Optional remark from MS</rsm:RemarkText>
  <rsm:CompetentAuthorityParty>
    ...
  </rsm:CompetentAuthorityParty>
  <rsm:CompetentAuthorityParty>
    ...
  </rsm:CompetentAuthorityParty>
  <rsm:FacilityReport>
    ...
  </rsm:FacilityReport>
</rsm:PollutantReleaseAndTransferReport>
```

¹ Indicates that data can be withheld by MS due to confidentiality

² Indicates that data is voluntary

```

</rsm:FacilityReport>
<rsm:FacilityReport>
...
</rsm:FacilityReport>
</rsm:PollutantReleaseAndTransferReport>

```

3.1.4 FacilityReport elements

The *FacilityReport elements* hold the reported data for each facility for the reporting year in question. It should be noticed that it is not possible to report data for another reporting year than the one stated in the report element.

Facility operators may voluntarily report optional information about the facility as marked in the list below.

Data can be classified as confidential by the competent authority as marked in the list below. In this case the specific confidential data must be withheld and the reason stated as described in section 3.1.1.

Element	Description	Conf.	Vol.
NationalID	The national Identification of the facility. Required.		
PreviousNationalID	In order to make it possible to display time series for the facility any changes in the national identification compared to previous reporting must be reported.		
NationalID	The previously reported national identification. If the national identification has not changed or the facility has not previously been reported, this must correspond to the current national identification.		
ReportingYear	The reporting year of which the previous national identification was reported. If the facility has not previously been reported, this must correspond to the current reporting year.		
ParentCompanyName	Name of the parent company, i.e. the company that owns or controls the company operating the facility. Required unless confidentiality is claimed	x	
FacilityName	Name of the facility (operator or owner). Required unless confidentiality is claimed.	x	
Address	The address of the facility. Required unless confidentiality is claimed.	x	
StreetName	The street name of the facility Required unless confidentiality is claimed.	x	
BuildingNumber	The building number of the facility.	x	
CityName	The Town/village of the facility. Required unless confidentiality is claimed.	x	
PostcodeCode	The Postal code of the facility.	x	

Element	Description	Conf.	Vol.
	Required unless confidentiality is claimed.		
GeographicalCoordinate	The coordinates of the location of the facility should be expressed in longitude and latitude coordinates giving a precision of the order of at least ± 500 meters and referring to the geographical centre of the site of the facility. Required.		
LongitudeMeasure	The longitude must be in the interval [-180; 180] Required		
LatitudeMeasure	The latitude must be in the interval [-90; 90]. Required.		
RiverBasinDistrictID	Identifies the river basin district according to according to Article 3(1) of Directive 2000/60/EC ("Water Framework Directive"). The legal codes can be found in the River Basin District code list at the following URL: http://www.eionet.europa.eu/schemas/eprtr/listOfValues Required		
NACEMainEconomicActivityCode	Identifies the NACE code according to the NACE 2 revision and thereby the main economic activity. The legal codes can be found in the NACE Activity code list at the following URL: http://www.eionet.europa.eu/schemas/eprtr/listOfValues Required.		
MainEconomicActivityName	The main economic activity corresponding to the NACE code in plain text according to section 1.1.6 of the E-PRTR Guidance Document [1]		
CompetentAuthorityPartyName	Identifies the competent authority in MS for public requests. Must correspond to the name of one of the CompetentAuthorityParty elements, se section 3.1.11. Required.		
ProductionVolume	The total production volume related to the main activity of the facility		x
ProductName	The product/product group. Required if ProductionVolume is reported.		
Quantity	The total volume. The unit must be given in attribute <i>unitCode</i> . The legal codes can be found in the Unit code list at the following URL: http://www.eionet.europa.eu/schemas/eprtr/listOfValues Required if ProductionVolume is reported.		
TotalIPPCInstallationQuantity	The total number of IPPC installations covered by the facility		x
OperationHours	The number of operating hours in reporting year		x
TotalEmployeeQuantity	The number of employees		x
NutsRegionID	Identifies the region that the facility belongs to as defined by NUTS (http://ec.europa.eu/eurostat/ramon/nuts/codelist_en.cfm)		x

Element	Description	Conf.	Vol.
	?list=nuts The legal codes can be found in the NUTS Region code list at the following URL: http://www.eionet.europa.eu/schemas/eprtr/listOfValues		
WebsiteCommunication	The website address of the facility.		x a)
WebsiteURIID	The website address must start with "http://". Required if WebsiteCommunication is reported		
PublicInformation	Textual information. Additional information to be published on web site as-is (e.g. e-mail, contact person etc.).		x a)
ConfidentialIndicator	Indicates if confidentiality for mandatory data is claimed or not. true marks confidentiality, false marks no confidentiality. Required		
ConfidentialCode	Identifies the reason for confidentiality according to Directive 2003/4/EC, Article 4(2). The legal codes can be found in the Confidentiality code list at the following URL: http://www.eionet.europa.eu/schemas/eprtr/listOfValues Required if confidentiality is claimed for mandatory data.		
ProtectVoluntaryData	Indicates if voluntary data should be protected or not. In this case all voluntary data of the facility is considered protected with a few exceptions at stated in the descriptions of the individual elements. true marks protection, false marks no protection. Required		
RemarkText	Textual remark, e.g. information in changes of the history of the facility, elaboration on the reason for confidentiality etc.		x b)
Activity	One or more Annex I activities of the facility as described in section 3.1.5		
PollutantRelease	Releases of pollutants to air/water/land as described in section 3.1.6		
PollutantTransfer	Off-site transfer of pollutants in waste-water as described in section 3.1.7.		
WasteTransfer	Off-site transfer of waste as described in section 3.1.8		

1.1.1.1 Data will be published even if protection of voluntary data is claimed.

2.1.1.1 Data will not be published even if protection of voluntary data is not claimed.

Example of the XML structure of the FacilityReport elements

```
<rsm:FacilityReport>
  <rsm:NationalID>a-3179376b</rsm:NationalID>
  <rsm:PreviousNationalID>
    <rsm:NationalID>3457-89</rsm:NationalID>
    <rsm:ReportingYear>2004</rsm:ReportingYear>
  </rsm:PreviousNationalID>
  <rsm:ParentCompanyName>Planet AG</rsm:ParentCompanyName>
```



```

<rsm:FacilityName>Planet AG, plant Nuremberg</rsm:FacilityName>
<rsm:Address>
  <rsm:StreetName>Planet street</rsm:StreetName>
  <rsm:BuildingNumber>5</rsm:BuildingNumber>
  <rsm:CityName>Nuremberg</rsm:CityName>
  <rsm:PostcodeCode>D-91034</rsm:PostcodeCode>
</rsm:Address>
<rsm:GeographicalCoordinate>
  <rsm:LongitudeMeasure>8.489870</rsm:LongitudeMeasure>
  <rsm:LatitudeMeasure>49.774467</rsm:LatitudeMeasure>
</rsm:GeographicalCoordinate>
<rsm:RiverBasinDistrictID>DE2000</rsm:RiverBasinDistrictID>
<rsm:NACEMainEconomicActivityCode>24.10</rsm:NACEMainEconomicActivityCode>
<rsm:MainEconomicActivityName>Manufacture of basic
chemicals</rsm:MainEconomicActivityName>
<rsm:CompetentAuthorityPartyName>Umweltbundesamt</rsm:CompetentAuthorityPart
yName>
<rsm:ProductionVolume>
  <rsm:ProductName>Surfaced treated products</rsm:ProductName>
  <rsm:Quantity unitCode="TNE">3879</rsm:Quantity>
</rsm:ProductionVolume>
<rsm:TotalIPPCInstallationQuantity>2</rsm:TotalIPPCInstallationQuantity>
<rsm:OperationHours>7816</rsm:OperationHours>
<rsm:TotalEmployeeQuantity>68</rsm:TotalEmployeeQuantity>
<rsm:NutsRegionID>DE22A</rsm:NutsRegionID>
<rsm:WebsiteCommunication>
  <rsm:WebsiteURIID>http://www.planetag.de</rsm:WebsiteURIID>
</rsm:WebsiteCommunication>
<rsm:PublicInformation>Some public information...</rsm:PublicInformation>
<rsm:ConfidentialIndicator>>false</rsm:ConfidentialIndicator>
<rsm:ProtectVoluntaryData>>false</rsm:ProtectVoluntaryData>
<rsm:RemarkText>Some remarks...</rsm:RemarkText>
<rsm:Activity>
  ...
</rsm:Activity>
...
<rsm:PollutantRelease>
  ...
</rsm:PollutantRelease>
...
<rsm:PollutantTransfer>
  ...
</rsm:PollutantTransfer>
...
<rsm:WasteTransfer>
  ...
</rsm:WasteTransfer>
...
</rsm:FacilityReport>

```

3.1.5 Activity elements

The *Activity elements* hold the reported E-PRTR Annex I Activities for a facility.

Data can not be classified as confidential

Element	Description	Conf.	Vol.
---------	-------------	-------	------

Element	Description	Conf.	Vol.
RankingNumeric	Consecutive ranking of the activities starting with 1. The activity with ranking = 1 shall be the main PRTR activity. Required		
AnnexIActivityCode	Identifies the Annex I activity according to Regulation 166/2006 Annex I, see [1]. The legal codes can be found in the Annex I Activity code list at the following URL: http://www.eionet.europa.eu/schemas/eprtr/listOfValues Required		

Example of the XML structure of the Activity elements

```

<rsm:Activity>
  <rsm:RankingNumeric>1</rsm:RankingNumeric>
  <rsm:AnnexIActivityCode>2.(f)</rsm:AnnexIActivityCode>
</rsm:Activity>
<rsm:Activity>
  <rsm:RankingNumeric>2</rsm:RankingNumeric>
  <rsm:AnnexIActivityCode>9.(c)</rsm:AnnexIActivityCode>
</rsm:Activity>

```

3.1.6 PollutantRelease elements

The *PollutantRelease elements* hold the reported releases of pollutants for a facility. It covers both releases to air, water and land. This will be indicated by the medium selected. Transfers in waste-water will be reported in the PollutantTransfer elements, see section 3.1.7.

When based on measurements or calculation information about the method used for determination of the quantity must be reported. If more than one method is used, all methods could be indicated (See the E-PRTR Guidance Document [1], section 1.1.11.5). Therefore, the methods used are modelled through a list of methods as described in section 3.1.10. However, the method basis (M/C/E) should only be reported once for a given pollutant. If more than one method is used the reported basis should correspond to the highest amount determined (See the E-PRTR Guidance Document [1], section 1.1.11).

Certain data can be classified as confidential by the operator/owner or the competent authority. In this case the pollutant group must be reported instead of the individual pollutant and marked confidential (See the E-PRTR Guidance Document [1], table 16). In this case the method(s) used must be kept confidential as described in section 3.1.10.

If marked confidential, the data of the pollutant group will still be published except for the methods used. This differs from the general approach described in section 3.1.1.

The MS might voluntarily report pollutants with values below threshold. If the value reported equals the threshold it will be regarded to be mandatory. If confidentiality is claimed the amounts for groups of pollutants are reported as described above. For each of the pollutants in the group different thresholds apply. Therefore it is assumed that as soon as confidentiality is claimed, the reported amount for a group of pollutants is above the threshold.

This method can score also facilities which get after rounding to three significant digits, data with values equal to threshold (e.g. operator reports voluntarily a value of 9999,00 kg/year NH₃; the result after rounding is 10 000 kg/year and that is equal to the threshold of 10 000 kg/a NH₃). Although the original data are below the threshold, this data will be consequently after rounding regarded to be mandatory and will be published.

Element	Description	Conf.	Vol.
MediumCode	Identifies the environmental medium (air, water, land). The legal codes can be found in the Medium code list at the following URL: http://www.eionet.europa.eu/schemas/eprtr/listOfValues Required.		
PollutantCode	Identifies the pollutant (or the pollutant group if confidentiality is claimed) Notice that if confidentiality is claimed the pollutant group must be reported as described above. The legal codes can be found in the Pollutant code list at the following URL: http://www.eionet.europa.eu/schemas/eprtr/listOfValues Required	x	
MethodBasisCode	Identifies the basis of the main method used (M/C/E). The legal codes can be found in the Method Basis code list at the following URL: http://www.eionet.europa.eu/schemas/eprtr/listOfValues Required.		
MethodUsed	Identifies the calculation and measurement method(s) used for determination of the total quantity as described in section 3.1.10. Required if method basis is M or C and confidentiality is not claimed.	x	
TotalQuantity	Total quantity including accidental quantity [kg/year]. Values below threshold are considered voluntary and will not be published. Must be reported with 3 significant digits. Optionally the unit can be given in attribute <i>unitCode</i> . Legal value is "KGM". Required.		(x) ³
AccidentalQuantity	Accidental quantity [kg/year] Must be reported with 3 significant digits. Required.		

³ Values below threshold are considered voluntary and will not be published.

Element	Description	Conf.	Vol.
ConfidentialIndicator	Indicates if confidentiality is claimed or not. true marks confidentiality, false marks no confidentiality. Optionally the unit can be given in attribute <i>unitCode</i> . Legal value is "KGM". Required		
ConfidentialCode	Identifies the reason for confidentiality according to Directive 2003/4/EC, Article 4(2). The legal codes can be found in the Confidentiality code list at the following URL: http://www.eionet.europa.eu/schemas/eprtr/listOfValues For releases of pollutants the legal reasons for confidentiality are restricted to Article 4(2)(b), (c) and (e). Required if confidentiality is claimed.		
RemarkText	Textual remark, e.g. elaboration on the reason for confidentiality. Will not be published		x

Example of the XML structure of the PollutantRelease elements

```

<rsm:PollutantRelease>
  <rsm:MediumCode>AIR</rsm:MediumCode>
  <rsm:PollutantCode>CO2</rsm:PollutantCode>
  <rsm:MethodBasisCode>M</rsm:MethodBasisCode>
  <rsm:MethodUsed>
    ...
  </rsm:MethodUsed>
  <rsm:TotalQuantity>413000000</rsm:TotalQuantity>
  <rsm:AccidentalQuantity>0.00</rsm:AccidentalQuantity>
  <rsm:ConfidentialIndicator>>false</rsm:ConfidentialIndicator>
  <rsm:RemarkText>Some remark...</rsm:RemarkText>
</rsm:PollutantRelease>

```

3.1.7 PollutantTransfer elements

The *PollutantTransfer elements* hold the reported data on off-site transfers of pollutants in waste water for a facility.

As for releases of pollutants more than one method could be used for determination of the quantity.

Data can be classified as confidential by the operator/owner or the competent authority in the same way as described for releases of pollutants, see section 3.1.6.

The MS might voluntary report waste transfer with values below threshold. If the value equals the threshold it will be regarded mandatory as described in section 3.1.6.

Element	Description	Conf.	Vol.
PollutantCode	Identifies the pollutant (or the pollutant group if confidentiality is claimed)	x	

Element	Description	Conf.	Vol.
	Notice that if confidentiality is claimed the pollutant group must be reported as described above. The legal codes can be found in the Pollutant code list at the following URL: http://www.eionet.europa.eu/schemas/eprtr/listOfValues Required		
MethodBasisCode	Identifies the basis of the main method used (M/C/E). The legal codes can be found in the Method Basis code list at the following URL: http://www.eionet.europa.eu/schemas/eprtr/listOfValues Required.		
MethodUsed	Identifies the calculation and measurement method(s) used for determination of the quantity as described in section 3.1.10. Required if method basis is M or C and confidentiality is not claimed.	x	
Quantity	Total quantity [kg/year]. Must be reported with 3 significant digits. Values below threshold are considered voluntary and will not be published. Optionally the unit can be given in attribute <i>unitCode</i> . Legal value is "TNE". Required.		(x) ⁴
ConfidentialIndicator	Indicates if confidentiality is claimed or not. true marks confidentiality, false marks no confidentiality. Required		
ConfidentialCode	Identifies the reason for confidentiality according to Directive 2003/4/EC, Article 4(2). The legal codes can be found in the Confidentiality code list at the following URL: http://www.eionet.europa.eu/schemas/eprtr/listOfValues Required if confidentiality is claimed.		
RemarkText	Textual remark, e.g. elaboration on the reason for confidentiality. Will not be published		x

Example of the XML structure of the PollutantTransfer elements

```

<rsm:PollutantTransfer>
  <rsm:PollutantCode>TOTAL - NITROGEN</rsm:PollutantCode>
  <rsm:MethodBasisCode>M</rsm:MethodBasisCode>
  <rsm:MethodUsed>
    ...
  </rsm:MethodUsed>
  <rsm:Quantity>76400000</rsm:Quantity>
  <rsm:ConfidentialIndicator>>false</rsm:ConfidentialIndicator>
  <rsm:RemarkText>Some remark...</rsm:RemarkText>
</rsm:PollutantTransfer>

```

⁴ Values below threshold are considered voluntary and will not be published.

3.1.8 WasteTransfer elements

The *WasteTransfer elements* hold the reported data on off-site transfers of waste for a facility, except transfers of pollutants in waste-water which is reported in the PollutantTransfer element, see section 3.1.7.

As for pollutants more than one method could be used for determination of the quantity.

If the waste is transferred to more than one waste handler, one WasteTransfer element per waste handler must be reported.

Data can be classified as confidential by the operator/owner or the competent authority. In practice, this means that the quantity and the waste treatment operation can be withheld. Also information about the recoverer/disposer and the method(s) used can be kept confidential as described in section 3.1.9 and 3.1.10 respectively. In this case the specific confidential data should be withheld and the reason stated as described in section 3.1.1.

The MS might voluntary report waste transfer with values below threshold. If the value equals the threshold, it will be regarded mandatory as described in section 3.1.6.

It should be noticed that the threshold for hazardous waste applies to the total amount of waste transferred within and outside the country. In cases where amounts are kept confidential, it is difficult to assess on facility level (where different waste transfers can occur) whether the total amount is above the threshold. Therefore it is assumed that if confidentiality of an amount is claimed, that amount (hazardous waste or non-hazardous waste) is above the threshold.

Element	Description	Conf.	Vol.
WasteTypeCode	Identifies the type of waste (non-hazardous, hazardous within country and hazardous outside country). The legal codes can be found in the Waste Type code list at the following URL: http://www.eionet.europa.eu/schemas/eprtr/listOfValues Required.		
WasteTreatmentCode	Identifies the waste treatment operation (recovery or disposal). The legal codes can be found in the Waste Treatment code list at the following URL: http://www.eionet.europa.eu/schemas/eprtr/listOfValues Required unless confidentiality is claimed.	x	
Quantity	Quantity [t/year] Must be reported with 3 significant digits. Required unless confidentiality is claimed	x	
MethodBasisCode	Identifies the basis of the main method used (M/C/E). The legal codes can be found in the Method Basis code	x	

Element	Description	Conf.	Vol.
	list at the following URL: http://www.eionet.europa.eu/schemas/eprtr/listOfValues Required unless confidentiality is claimed.		
MethodUsed	I Identifies the calculation and measurement method(s) used for determination of the quantity as described in section 3.1.10. Required if method basis is M or C and confidentiality is not claimed.	x	
ConfidentialIndicator	Indicates if confidentiality is claimed or not. true marks confidentiality, false marks no confidentiality. Required		
ConfidentialCode	Identifies the reason for confidentiality according to Directive 2003/4/EC, Article 4(2). The legal codes can be found in the Confidentiality code list at the following URL: http://www.eionet.europa.eu/schemas/eprtr/listOfValues Required if confidentiality is claimed.		
RemarkText	Textual remark, e.g. elaboration on the reason for confidentiality. Will not be published		x
WasteHandlerParty	Identifies the recoverer/disposer of the waste as described in section 3.1.10. Required for transfer of hazardous waste outside the country unless confidentiality is claimed.	x	

Example of the XML structure of the wasteTransfer elements

```

<rsm:WasteTransfer>
  <rsm:WasteTypeCode>HWOC</rsm:WasteTypeCode>
  <rsm:WasteTreatmentCode>R</rsm:WasteTreatmentCode>
  <rsm:Quantity>15.0</rsm:Quantity>
  <rsm:MethodBasisCode>M</rsm:MethodBasisCode>
  <rsm:MethodUsed>
    ...
  </rsm:MethodUsed>
  <rsm:ConfidentialIndicator>>false</rsm:ConfidentialIndicator>
  <rsm:RemarkText>Some remark...</rsm:RemarkText>
  <rsm:WasteHandlerParty>
    ...
  </rsm:WasteHandlerParty>
</rsm:WasteTransfer>

```

3.1.9 WasteHandlerParty element

The *WasteHandlerParty element* holds information about the recoverer/disposer of waste. This should only be reported for waste transfer of hazardous waste outside the country.

If waste data is classified as confidential this includes information about the waste handler. See section 3.1.9. In this case the country can choose to withhold parts or even all information about the recoverer/disposer.

In this case the specific confidential data must be withheld and the reason stated as described in section 3.1.1.

Element	Description	Conf.	Vol.
Name	Name of recoverer/disposer Required unless confidentiality is claimed for the WasteTransfer element (3.1.8).	x	
Address	The address of the recoverer/disposer. Required unless confidentiality is claimed for the WasteTransfer element (3.1.8).	x	
StreetName	The street name of recoverer/disposer Required unless confidentiality is claimed for the WasteTransfer element (3.1.8).	x	
BuildingNumber	The building number of recoverer/disposer		
CityName	The town/village of recoverer/disposer Required unless confidentiality is claimed for the WasteTransfer element (3.1.8).	x	
PostcodeCode	The postal code of recoverer/disposer Required unless confidentiality is claimed for the WasteTransfer element (3.1.8).	x	
CountryID	The country of recoverer/disposer The legal codes can be found in the Country code list at the following URL: http://www.eionet.europa.eu/schemas/eprtr/listOfValues Required unless confidentiality is claimed for the WasteTransfer element (3.1.8).	x	
SiteAddress	The address of the actual recoverer/disposer site. Required unless confidentiality is claimed for the WasteTransfer element (3.1.8).	x	
StreetName	The street name of actual recovery/disposal site. Required unless confidentiality is claimed for the WasteTransfer element (3.1.8).	x	
BuildingNumber	The building number of actual recovery/disposal site.		
CityName	Town/village of actual recovery/disposal site Required unless confidentiality is claimed for the WasteTransfer element (3.1.8).	x	
PostcodeCode	The postal code of actual recovery/disposal site. Required unless confidentiality is claimed for the WasteTransfer element (3.1.8).	x	
CountryID	The country of actual recovery/disposal site The legal codes can be found in the Country code list at the following URL: http://www.eionet.europa.eu/schemas/eprtr/listOfValues	x	

Element	Description	Conf.	Vol.
	Required unless confidentiality is claimed for the WasteTransfer element (3.1.8).		

Example of the XML structure of the WasteHandlerParty element

```

<rsm:WasteHandlerParty>
  <rsm:Name>Sunshine Components Ltd.</rsm:Name>
  <rsm:Address>
    <rsm:StreetName>Sun Street</rsm:StreetName>
    <rsm:BuildingNumber>12</rsm:BuildingNumber>
    <rsm:CityName>Flowertown south</rsm:CityName>
    <rsm:PostcodeCode>PP12 8TS</rsm:PostcodeCode>
    <rsm:CountryID>UK</rsm:CountryID>
  </rsm:Address>
  <rsm:SiteAddress>
    <rsm:StreetName>Sun Street</rsm:StreetName>
    <rsm:BuildingNumber>12</rsm:BuildingNumber>
    <rsm:CityName>Flowertown south</rsm:CityName>
    <rsm:PostcodeCode>PP12 8TS</rsm:PostcodeCode>
    <rsm:CountryID>UK</rsm:CountryID>
  </rsm:SiteAddress>
</rsm:WasteHandlerParty>

```

3.1.10 MethodUsed elements

The *MethodUsed elements* hold information about the methods used for determination of the quantity of a pollutant or waste. At least one method must be reported where the determination is based on measurements or calculation. If more than one method is used, all methods could be indicated. See [1], section 1.1.11.5.

If release or transfer of a pollutant data is classified as confidential this must include information about the method used. Also for waste transfer the method used can be kept confidential. In all cases the method used is kept confidential by omitting the entire MethodUsed element.

Element	Description	Conf.	Vol.
MethodTypeCode	Identifies the type of method used (CEN/ISO, ETS, etc.) The legal codes can be found in the Method Type list at the following URL: http://www.eionet.europa.eu/schemas/eprtr/listOfValues Notice that the method type "WEIGH" (i.e. weighing) only is allowed for waste transfer. Required.	x a)	
Designation	A short designation or description of the method used. Required for some method types. The method types that require a designation can be seen from the list of legal method type codes.	x a)	

a) If confidentiality is claimed the whole MethodUsed element must be omitted.

Example of the XML structure of the MethodUsed elements

```

<rsm:MethodUsed>
  <rsm:MethodTypeCode>CEN/ISO</rsm:MethodTypeCode>
  <rsm:Designation>ISO 12039:2001</rsm:Designation>
</rsm:MethodUsed>
<rsm:MethodUsed>
  <rsm:MethodTypeCode>PER</rsm:MethodTypeCode>
</rsm:MethodUsed>

```

3.1.11 CompetentAuthorityParty elements

For each facility, the competent authority in charge to respond to requests from the public must be reported as previously described. The data for a given competent authority (name, address etc) is reported separately in order to avoid data to be reported more than once per reporting year.

This means that several facility reports belonging to the same report, can share the information which makes the updates of the information easier. It should be noticed that information will not be re-used across reporting years.

Data can not be classified as confidential.

Element	Description	Conf.	Vol.
Name	Name of the competent authority. Required.		
Address	The address of the competent authority. The country is assumed to correspond to the country reporting Required		
StreetName	The Street name. Required.		
BuildingNumber	The building number If reported, data will be published.		x
CityName	The Town/village. Required.		
PostcodeCode	The postal code If reported, data will be published.		x
TelephoneCommunication	The phone number Required.		
CompleteNumberText	The text string of characters that make up the complete number. Required..		
FaxCommunication	The fax number		
CompleteNumberText	The text string of characters that make up the complete number. Required.		
EmailCommunication	The e-mail address Required		
EmailURIID	The Uniform Resource Identifier (URI) for this email		

Element	Description	Conf.	Vol.
	communication. Due to the complexity of e-mail address syntax, the only thing that will be validated is whether the address contains an @. Required.		
ContactPersonName	Name of contact person. If reported, data will be published.		x

Example of the XML structure of the authority elements

```

<rsm:CompetentAuthorityParty>
  <rsm:Name>Umweltbundesamt</rsm:Name>
  <rsm:Address>
    <rsm:StreetName>Wörlitzer Platz</rsm:StreetName>
    <rsm:BuildingNumber>1</rsm:BuildingNumber>
    <rsm:CityName>Dessau-Roßlau</rsm:CityName>
    <rsm:PostcodeCode>06844</rsm:PostcodeCode>
  </rsm:Address>
  <rsm:TelephoneCommunication>
    <rsm:CompleteNumberText>+49 1234567-8900</rsm:CompleteNumberText>
  </rsm:TelephoneCommunication>
  <rsm:FaxCommunication>
    <rsm:CompleteNumberText>+49 1234567-8901</rsm:CompleteNumberText>
  </rsm:FaxCommunication>
  <rsm:EmailCommunication>
    <rsm:EmailURIID>peter.kaufmann@uba.de</rsm:EmailURIID>
  </rsm:EmailCommunication>
  <rsm:ContactPersonName>Peter Kaufmann</rsm:ContactPersonName>
</rsm:CompetentAuthorityParty>

```

3.2 Validation rules

Besides the rules described for the individual elements the following rules must be fulfilled. The rules are meant to ensure that the reported data are compliant with the E-PRTR guidance document [1].

The Validation rules have been divided into 7 groups:

- Mandatory checks
- Additional validations
- Complementary Validation: Confidentiality and Completeness
- Complementary Validation: Coordinates and NUTS check
- Complementary Validation: Facility ID
- Complementary Validation: Outliers
- Complementary Validation: use of Hyphens and Zeroes

To help the user to understand how the validation rules works, all the checks have been captured in tables containing:

- the text in **BLUE** signals the warning or text in **RED** signals the error
- a short description of the error/warning and some guidance on how to fix it.

- a sample XML showing the source of the error/warning.
- the result displayed on the screen produced by the sample XML.

3.2.1 Mandatory checks

Deviation from any of the rules described in this section will be considered as errors and will prevent data from being stored in the E-PRTR database.

For a given report the following must apply:

- A facility must not be reported twice, i.e. the national identification must be unique.
- All facilities must have at least one activity.
- All facilities must have exactly one activity with Ranking = 1 (the main activity).
- An activity must not be reported twice for the same facility.
- The ranking of activities must be unique within a facility.
- A pollutant must not be reported twice for the same medium and facility.
- For releases the total quantity must be greater or equal than the accidental quantity as the accidental quantity is contained in the total quantity.
- If confidentiality is claimed for releases and transfers of pollutants the pollutant group (e.g. heavy metals) must be reported instead of the individual pollutant (e.g. Pb). This means that only pollutant codes corresponding to a pollutant group are allowed when claiming confidentiality. If confidentiality is not claimed, pollutant codes corresponding to pollutant groups are not allowed.
- When reporting releases and transfers of pollutants with method basis “M” or “C” at least one method for determining the quantity must be reported unless confidentiality is claimed.
- Information about the waste handler (recoverer/disposer) is only allowed to be reported for HW outside the country.
- When reporting transfers of waste with method basis “M” or “C” at least one method must be reported unless confidentiality is claimed
- If the method type requires a designation, this must be reported. The description itself will not be validated as this would require a comprehensive list of all possible methods to be maintained.
- A competent authority must not be reported more than once (Identified by the name of the authority)
- The competent authority of a facility must be known (i.e. reported in the list of authorities)

Furthermore since the method basis (M/C/E) should only be reported corresponding to the highest amount, it can not be validated that the method basis matches the reported method types.

3.2.1.1 XML Schema validation

In local E-PRTR Validation Tool XML Schema validation is skipped in Mandatory check and it is performed in a separate rule. In this rule feedback the message below is displayed for XML Schema Validation:

The test is skipped in Validation Tool. XML Schema validation is done separately and if the result contains any errors, then data delivery is not acceptable.

3.2.1.2 Envelope Validation

Envelope check will be performed after uploading the delivery to the CDR. In local Validation Tool the check is skipped and the message below is displayed:

The test is skipped in Validation Tool. Envelope Validation will be done after uploading the delivery.

3.2.1.3 Compliance Validation

3.2.1.3.1 Validation of Codes

Purpose: This validation examines the format of the reporting year and if any codes are illegal according to the code lists.

1. The **Reporting year check** checks if the main report Reporting Year and all Facility Reports reporting years values are equal or smaller than current year.
2. The **Code list checks** check if all corresponding field values match to code list values that are listed at <http://www.eionet.europa.eu/schemas/eprtr/listOfValues>. Fields which value must be a code list value are listed in chapter "XML Schema". Invalid codes and number of occurrence are displayed in the results.

Checks in this rule:

Check#	Warning	Description of the warning.
1	[Reported value]	The reported illegal year value is displayed in red. The following reporting years are not legal
Sample XML <pre> <rsm:ReportingYear>2016</rsm:ReportingYear> <rsm:CountryID>IE</rsm:CountryID> <rsm:CoordinateSystemID>EPSG:4326</rsm:CoordinateSy </pre> <div style="border: 1px solid red; border-radius: 50%; width: 100px; height: 20px; display: inline-block; margin-left: 100px; margin-top: 10px;">Illegal year</div>		
Result		

Illegal Reporting year

The reporting year can not be later than current year.

The following reporting years are not legal:

Reporting year
2016

Check#	Warning	Description of the warning.
2	[Reported value] [No of occurrence]	The reported value that does not exist in the code list is shown in red and no of occurrence is displayed in the other column. Also the location of code list is displayed.

Sample XML

```
<rsm:ReportingYear>2016</rsm:ReportingYear>
<rsm:CountryID>00</rsm:CountryID>
<rsm:CoordinateSystemID>EPSG:4326</rsm:CoordinateSystemID>
▼<rsm:FacilityReport>
  <rsm:NationalID>D0013</rsm:NationalID>
  ▼<rsm:PreviousNationalID>
    <rsm:NationalID>D0013</rsm:NationalID>
    <rsm:ReportingYear>2007</rsm:ReportingYear>
  </rsm:PreviousNationalID>
```

Wrong country code

Result

Illegal CountryID

Legal CountryID values can be found at: http://converters.eionet.europa.eu/xmlfile/EPRTTR_CountryCode_1.xml

The following codes are not legal according to the code list:

Code	No. of occurrences
00	1

3.2.1.3.2 Validation of Facility Reports

Purpose: This validation examines several issues related to facility report: duplicates, mandatory elements etc.

1. The **Duplicate Facility report** check checks if more than one facility reports with same *NationalID* have been reported.
2. The **Not Listed Competent Authorities** check checks if there exist any Competent Authorities in Facility Reports that are not listed in the Competent Authority Party element.
3. The **Facilities With No Activity** check checks if there are any Facility Reports without any activities
4. The **Missing Main Activity Check** checks if there are any Facility Reports without main activity (Ranking =1)

5. The **Duplicate Activity Check** checks if there exist any Activities with the same Annex I Activity Code in the Facility Report
6. The **Duplicate Activity Ranking Check** checks if there exist any Activities with the same Ranking in the Facility Report
7. The **Mandatory Information Check** check if any of the following mandatory field values is missing: *Parent Company Name, Facility Name, Address, Street, City, Post Code*
8. The **Illegal Confidential Codes Check** checks if a Confidential Code is set to not Confidential Facility Reports or not set to Confidential Facility Reports
9. The **Web Site Check** checks if Facility Web Site URI is in correct format if entered.

Checks in this rule:

Check#	Warning	Description of the warning.
1	[NationalID] [Facility Data]	Duplicate Facility <i>NationalID</i> values and Facility details are displayed in a table

Sample XML

```

▼<rsm:FacilityReport>
  <rsm:NationalID>D0013</rsm:NationalID>
  ▶<rsm:PreviousNationalID>...</rsm:PreviousNationalID>
  ▶<rsm:ParentCompanyName>...</rsm:ParentCompanyName>
  <rsm:FacilityName>Bunlicky Waste Water Treatment Plant</rsm:FacilityName>
  ▶<rsm:GeographicalCoordinate>...</rsm:GeographicalCoordinate>
  <rsm:RiverBasinDistrictID>IEGBNISH</rsm:RiverBasinDistrictID>
  <rsm:NACEMainEconomicActivityCode>37.00</rsm:NACEMainEconomicActivityCode>
  <rsm:MainEconomicActivityName>Sewerage</rsm:MainEconomicActivityName>
  <rsm:CompetentAuthorityPartyName>Environmental
  <rsm>TotalIPPCInstallationQuantity>1</rsm>TotalIPPCInstallationQuantity>
  <rsm:OperationHours>8760</rsm:OperationHours>
  <rsm>TotalEmployeeQuantity>4</rsm>TotalEmployeeQuantity>
  <rsm:NutsRegionID>IE023</rsm:NutsRegionID>
  ▶<rsm:WebsiteCommunication>...</rsm:WebsiteCommunication>
  <rsm:ConfidentialIndicator>>false</rsm:ConfidentialIndicator>
  <rsm:ProtectVoluntaryData>>true</rsm:ProtectVoluntaryData>
</rsm:FacilityReport>
▼<rsm:FacilityReport>
  <rsm:NationalID>D0013</rsm:NationalID>
  ▶<rsm:PreviousNationalID>...</rsm:PreviousNationalID>
  <rsm:ParentCompanyName>Louth County Council</rsm:ParentCompanyName>

```

Duplicate facility ID

Result

Controlled for duplicates

A specific national ID of a facility is not allowed to be reported more than once.

The following duplicates were found:

National ID	Facility name	Parent company	Address	Confidential	Reason for conf.	Comp. Authority
D0013	Bunlicky Waste Water Treatment Plant	Environmental Protection Agency - Limerick City Council	-Not reported-	No	-Not reported-	Environmental Protection Agency
D0013	Dundalk Waste Water Treatment Plant	Louth County Council	-Not reported-	Yes	-Not reported-	Environmental Protection Agency
D0013	Bunlicky Waste Water Treatment Plant	Limerick City Council	Bunlicky Limerick City, Co. Limerick, -	No	-Not reported-	Environmental Protection Agency

Check#	Warning	Description of the warning.
2	[Competent Authority Details]	Unknown Competent Authorities details

Sample XML

```

<rsm:FacilityReport>
  <rsm:NationalID>D0013</rsm:NationalID>
  <rsm:PreviousNationalID>...</rsm:PreviousNationalID>
  <rsm:ParentCompanyName>Louth County Council</rsm:ParentCompanyName>
  <rsm:FacilityName>Dundalk Waste Water Treatment Plant</rsm:FacilityName>
  <rsm:GeographicalCoordinate>...</rsm:GeographicalCoordinate>
  <rsm:RiverBasinDistrictID>GBNIIENB</rsm:RiverBasinDistrictID>
  <rsm:NACEMainEconomicActivityCode>37.00</rsm:NACEMainEconomicActivityCode>
  <rsm:MainEconomicActivityName>Sewerage</rsm:MainEconomicActivityName>
  <rsm:CompetentAuthorityPartyName>Environmental Protection Agency</rsm:CompetentAuthorityPartyName>
  <rsm>TotalIPPCInstallationQuantity>0</rsm>TotalIPPCInstallationQuantity>
  <rsm:OperationHours>0</rsm:OperationHours>
  <rsm>TotalEmployeeQuantity>0</rsm>TotalEmployeeQuantity>
  <rsm:NutsRegionID>IE011</rsm:NutsRegionID>
  <rsm:ConfidentialIndicator>true</rsm:ConfidentialIndicator>
  <rsm:ProtectVoluntaryData>true</rsm:ProtectVoluntaryData>
</rsm:FacilityReport>
  
```

Competent Authority

No *rsm:CompetentAuthorityParty* element in the delivery XML

Result

Controlled for non-existing competent authorities

Competent authorities must be present in the list.

The following non-existing competent authorities were found:

National ID	Facility name	Parent company	Address	Confidential	Reason for conf.	Comp. Authority
D0013	Bunlicky Waste Water Treatment Plant	Environmental Protection Agency - Limerick City Council	-Not reported-	No	-Not reported-	Environmental Protection Agency
D0013	Dundalk Waste Water Treatment Plant	Louth County Council	-Not reported-	Yes	-Not reported-	Environmental Protection Agency
P0001	Smartply Europe Limited	Smartply Europe Limited	-Not reported-	No	-Not reported-	Environmental Protection Agency

Check#	Warning	Description of the warning.
3	[Facility Details]	Displays table of Facilities that have no activities listed

Sample XML


```

▼<rsm:FacilityReport>
  <rsm:NationalID>P0008</rsm:NationalID>
  ▼<rsm:PreviousNationalID>
    <rsm:NationalID>P0008</rsm:NationalID>
    <rsm:ReportingYear>2008</rsm:ReportingYear>
  </rsm:PreviousNationalID>
  <rsm:ParentCompanyName>Leo Laboratories Limited</rsm:ParentCompanyName>
  <rsm:FacilityName>Leo Laboratories Limited</rsm:FacilityName>
  ▼<rsm:GeographicalCoordinate>
    <rsm:LongitudeMeasure>-6.29922</rsm:LongitudeMeasure>
    <rsm:LatitudeMeasure>53.3161</rsm:LatitudeMeasure>
  </rsm:GeographicalCoordinate>
  <rsm:RiverBasinDistrictID>IEEA</rsm:RiverBasinDistrictID>
  <rsm:NACEMainEconomicActivityCode>21.20</rsm:NACEMainEconomicActivityCode>
  <rsm:MainEconomicActivityName>Manufacture of pharmaceutical preparations</rsm:
  <rsm:CompetentAuthorityPartyName>Environmental Protection Agency</rsm:Competen
  <rsm>TotalIPPCInstallationQuantity>0</rsm>TotalIPPCInstallationQuantity>
  <rsm:OperationHours>0</rsm:OperationHours>
  <rsm>TotalEmployeeQuantity>0</rsm>TotalEmployeeQuantity>
  <rsm:NutsRegionID>IE021</rsm:NutsRegionID>
  <rsm:ConfidentialIndicator>false</rsm:ConfidentialIndicator>
  <rsm:ProtectVoluntaryData>true</rsm:ProtectVoluntaryData>
</rsm:FacilityReport>
▼<rsm:Activity>
  <rsm:RankingNumeric>1</rsm:RankingNumeric>
  <rsm:AnnexIActivityCode>4. (S) </rsm:AnnexIActivityCode>
</rsm:Activity>

```

Facility

Activity element is outside Facility Report element

Result

Controlled for missing Annex I activities

At least one Annex I activity must be reported per facility.

The following facilities without reporting of activities were found:

National ID	Facility name	Parent company	Address	Confidential	Reason for conf.	Comp. Authority
D0013	Bunlicky Waste Water Treatment Plant	Environmental Protection Agency - Limerick City Council	-Not reported-	No	-Not reported-	Environmental Protection Agency
D0013	Dundalk Waste Water Treatment Plant	Louth County Council	-Not reported-	Yes	-Not reported-	Environmental Protection Agency
P0004	Smithkline Beecham (Cork) Limited	Smithkline Beecham (Cork) Limited	-Not reported-	No	-Not reported-	Environmental Protection Agency
P0007	Astellas Ireland Co., Limited	Astellas Ireland Co., Limited	-Not reported-	No	-Not reported-	Environmental Protection Agency
P0008	Leo Laboratories Limited	Leo Laboratories Limited	-Not reported-	No	-Not reported-	Environmental Protection Agency

Check#	Warning	Description of the warning.
4	[Facility Details]	Table of facilities that do not have Main Activity (Ranking=1)

Sample XML

```

<rsm:FacilityReport>
  <rsm:NationalID>P0001</rsm:NationalID>
  <rsm:PreviousNationalID>
    <rsm:NationalID>P0001</rsm:NationalID>
    <rsm:ReportingYear>2007</rsm:ReportingYear>
  </rsm:PreviousNationalID>
  <rsm:ParentCompanyName>Smartply Europe Limited</rsm:ParentCompanyName>
  <rsm:FacilityName>Smartply Europe Limited</rsm:FacilityName>
  <rsm:GeographicalCoordinate>
    <rsm:LongitudeMeasure>-7.03300</rsm:LongitudeMeasure>
    <rsm:LatitudeMeasure>52.2738</rsm:LatitudeMeasure>
  </rsm:GeographicalCoordinate>
  <rsm:RiverBasinDistrictID>IESE</rsm:RiverBasinDistrictID>
  <rsm:NACEMainEconomicActivityCode>16.21</rsm:NACEMainEconomicActivityCode>
  <rsm:MainEconomicActivityName>Manufacture of veneer sheets and wood-based panels</rsm:MainEconomicActivityName>
  <rsm:CompetentAuthorityPartyName>Environmental Protection Agency</rsm:CompetentAuthorityPartyName>
  <rsm>TotalIPPCInstallationQuantity>1</rsm>TotalIPPCInstallationQuantity>
  <rsm:OperationHours>0</rsm:OperationHours>
  <rsm>TotalEmployeeQuantity>0</rsm>TotalEmployeeQuantity>
  <rsm:NutsRegionID>IE024</rsm:NutsRegionID>
  <rsm:ConfidentialIndicator>false</rsm:ConfidentialIndicator>
  <rsm:ProtectVoluntaryData>true</rsm:ProtectVoluntaryData>
  <rsm:Activity>
    <rsm:RankingNumeric>2</rsm:RankingNumeric>
    <rsm:AnnexIActivityCode>1. (c) </rsm:AnnexIActivityCode>
  </rsm:Activity>
  <rsm:Activity>
    <rsm:RankingNumeric>2</rsm:RankingNumeric>
    <rsm:AnnexIActivityCode>1. (c) </rsm:AnnexIActivityCode>
  </rsm:Activity>
</rsm:FacilityReport>

```

No Ranking 1

Result

Controlled for missing main Annex I activity

The main Annex I activity of a facility must be reported. This is done by setting ranking = 1.

The following facilities without reporting of a main Annex I activity were found:

National ID	Facility name	Parent company	Address	Confidential	Reason for conf.	Comp. Authority
P0001	Smartply Europe Limited	Smartply Europe Limited	-Not reported-	No	-Not reported-	Environmental Protection Agency

Check#	Warning	Description of the warning.
5	[Activity Code] [Facility and Ranking]	Duplicate Activity Code in red and Facility and ranking codes are displayed in a table

Sample XML

```

<rsm:FacilityReport>
  <rsm:NationalID>P0001</rsm:NationalID>
  <rsm:PreviousNationalID>
    <rsm:NationalID>P0001</rsm:NationalID>
    <rsm:ReportingYear>2007</rsm:ReportingYear>
  </rsm:PreviousNationalID>
  <rsm:ParentCompanyName>Smartply Europe Limited</rsm:ParentCompanyName>
  <rsm:FacilityName>Smartply Europe Limited</rsm:FacilityName>
  <rsm:GeographicalCoordinate>
    <rsm:LongitudeMeasure>-7.03300</rsm:LongitudeMeasure>
    <rsm:LatitudeMeasure>52.2738</rsm:LatitudeMeasure>
  </rsm:GeographicalCoordinate>
  <rsm:RiverBasinDistrictID>IESE</rsm:RiverBasinDistrictID>
  <rsm:NACEMainEconomicActivityCode>16.21</rsm:NACEMainEconomicActivityCode>
  <rsm:MainEconomicActivityName>Manufacture of veneer sheets and wood-based panels</rsm:MainEconomicActivityName>
  <rsm:CompetentAuthorityPartyName>Environmental Protection Agency</rsm:CompetentAuthorityPartyName>
  <rsm:TotalIPPCInstallationQuantity>1</rsm:TotalIPPCInstallationQuantity>
  <rsm:OperationHours>0</rsm:OperationHours>
  <rsm:TotalEmployeeQuantity>0</rsm:TotalEmployeeQuantity>
  <rsm:NutsRegionID>IE024</rsm:NutsRegionID>
  <rsm:ConfidentialIndicator>false</rsm:ConfidentialIndicator>
  <rsm:ProtectVoluntaryData>true</rsm:ProtectVoluntaryData>
  <rsm:Activity>
    <rsm:RankingNumeric>2</rsm:RankingNumeric>
    <rsm:AnnexIActivityCode>1.(c)</rsm:AnnexIActivityCode>
  </rsm:Activity>
  <rsm:Activity>
    <rsm:RankingNumeric>2</rsm:RankingNumeric>
    <rsm:AnnexIActivityCode>1.(c)</rsm:AnnexIActivityCode>
  </rsm:Activity>
</rsm:FacilityReport>

```

Same AnnexIActivityCode

Result

Controlled for duplicate activities

A specific E-PRTR activity code is not allowed to be reported more than once for a facility.

The following duplicates were found:

Facility	Ranking	E-PRTR code
P0001	2	1.(c)
P0001	2	1.(c)

Check#	Warning	Description of the warning.
6	[Ranking] [Facility and Activity Code]	Duplicate Ranking (in red) and Facility and Ranking codes are displayed in a table

Sample XML

```

<rsm:FacilityReport>
  <rsm:NationalID>P0001</rsm:NationalID>
  <rsm:PreviousNationalID>
    <rsm:NationalID>P0001</rsm:NationalID>
    <rsm:ReportingYear>2007</rsm:ReportingYear>
  </rsm:PreviousNationalID>
  <rsm:ParentCompanyName>Smartply Europe Limited</rsm:ParentCompanyName>
  <rsm:FacilityName>Smartply Europe Limited</rsm:FacilityName>
  <rsm:GeographicalCoordinate>
    <rsm:LongitudeMeasure>-7.03300</rsm:LongitudeMeasure>
    <rsm:LatitudeMeasure>52.2738</rsm:LatitudeMeasure>
  </rsm:GeographicalCoordinate>
  <rsm:RiverBasinDistrictID>IESE</rsm:RiverBasinDistrictID>
  <rsm:NACEMainEconomicActivityCode>16.21</rsm:NACEMainEconomicActivityCode>
  <rsm:MainEconomicActivityName>Manufacture of veneer sheets and wood-based panels</rsm:MainEconomicActivityName>
  <rsm:CompetentAuthorityPartyName>Environmental Protection Agency</rsm:CompetentAuthorityPartyName>
  <rsm>TotalIPPCInstallationQuantity>1</rsm>TotalIPPCInstallationQuantity>
  <rsm:OperationHours>0</rsm:OperationHours>
  <rsm>TotalEmployeeQuantity>0</rsm>TotalEmployeeQuantity>
  <rsm:NutsRegionID>IE024</rsm:NutsRegionID>
  <rsm:ConfidentialIndicator>false</rsm:ConfidentialIndicator>
  <rsm:ProtectVoluntaryData>true</rsm:ProtectVoluntaryData>
  <rsm:Activity>
    <rsm:RankingNumeric>2</rsm:RankingNumeric>
    <rsm:AnnexIActivityCode>1.(c)</rsm:AnnexIActivityCode>
  </rsm:Activity>
  <rsm:Activity>
    <rsm:RankingNumeric>2</rsm:RankingNumeric>
    <rsm:AnnexIActivityCode>1.(c)</rsm:AnnexIActivityCode>
  </rsm:Activity>
</rsm:FacilityReport>

```

Same AnnexIActivityCode and Ranking Code

Result

Controlled for duplicate activity rankings

The ranking of the activities must be unique for a facility.

The following duplicates were found:

Facility	Ranking	E-PRTR code
P0001	2	1.(c)
P0001	2	1.(c)

Check#	Warning	Description of the warning.
7	[Facility Data]	Facilities with an incorrect Web site format listed in a table.

Sample XML

```

▼<rsm:FacilityReport>
  <rsm:NationalID>D0013</rsm:NationalID>
  ▶<rsm:PreviousNationalID>...</rsm:PreviousNationalID>
  <rsm:ParentCompanyName>Louth County Council</rsm:ParentCompanyName>
  <rsm:FacilityName>Dundalk Waste Water Treatment Plant</rsm:FacilityName>
  ▶<rsm:GeographicalCoordinate>...</rsm:GeographicalCoordinate>
  <rsm:RiverBasinDistrictID>GBNIIENB</rsm:RiverBasinDistrictID>
  <rsm:NACEMainEconomicActivityCode>37.00</rsm:NACEMainEconomicActivityCode>
  <rsm:MainEconomicActivityName>Sewerage</rsm:MainEconomicActivityName>
  <rsm:CompetentAuthorityPartyName>Environmental Protection Agency</rsm:CompetentAuthorityPartyName>
  <rsm:TotalIPPCInstallationQuantity>0</rsm:TotalIPPCInstallationQuantity>
  <rsm:OperationHours>0</rsm:OperationHours>
  <rsm:TotalEmployeeQuantity>0</rsm:TotalEmployeeQuantity>
  <rsm:NutsRegionID>IE011</rsm:NutsRegionID>
  <rsm:ConfidentialIndicator>true</rsm:ConfidentialIndicator>
  <rsm:ProtectVoluntaryData>true</rsm:ProtectVoluntaryData>
</rsm:FacilityReport>
  
```

No Address element

Result

Controlled mandatory data

Unless claiming confidentiality the following mandatory data must be reported: The name of the parent company, the name of the facility and the address (street address, city and postal code)

The following facilities with missing mandatory data were found:

National ID	Facility name	Parent company	Address	Confidential	Reason for conf.	Comp. Authority
D0013	Bunlicky Waste Water Treatment Plant	Environmental Protection Agency - Limerick City Council	-Not reported-	No	-Not reported-	Environmental Protection Agency
P0001	Smartply Europe Limited	Smartply Europe Limited	-Not reported-	No	-Not reported-	Environmental Protection Agency
P0004	Smithkline Beecham (Cork) Limited	Smithkline Beecham (Cork) Limited	-Not reported-	No	-Not reported-	Environmental Protection Agency
P0005	Schering-Plough (Brinny) Company	Schering-Plough (Brinny) Company	-Not reported-	No	-Not reported-	Environmental Protection Agency
P0006	Novartis Ringaskiddy Limited	Novartis Ringaskiddy Limited	-Not reported-	No	-Not reported-	Environmental Protection Agency
P0007	Astellas Ireland Co., Limited	Astellas Ireland Co., Limited	-Not reported-	No	-Not reported-	Environmental Protection Agency
P0008	Leo Laboratories Limited	Leo Laboratories Limited	-Not reported-	No	-Not reported-	Environmental Protection Agency

Check#	Warning	Description of the warning.
8	[Facility Details]	Facilities with missing or redundant confidentiality data are listed in a table.

Sample XML

```

    <▼rsm:PollutantRelease>
      <rsm:MediumCode>WATER</rsm:MediumCode>
      <rsm:PollutantCode>--</rsm:PollutantCode>
      <rsm:MethodBasisCode>0</rsm:MethodBasisCode>
      <▼rsm:MethodUsed>
        <rsm:MethodTypeCode>WEIGH</rsm:MethodTypeCode>
        <rsm:Designation/>
      </rsm:MethodUsed>
      <rsm:TotalQuantity>17.0</rsm:TotalQuantity>
      <rsm:AccidentalQuantity>22.00</rsm:AccidentalQuantity>
      <rsm:ConfidentialIndicator>false</rsm:ConfidentialIndicator>
      <rsm:ConfidentialCode>A42a</rsm:ConfidentialCode>
    </rsm:PollutantRelease>
  
```

Non-confidential information but confidentiality code element reported

Result

Controlled reason for confidentiality

When claiming confidentiality the reason must be reported. For pollutant releases the legal reasons for confidentiality are restricted to Article 4(2)(b), (c) and (e). For non-confident pollutant releases no reason must be reported.

The following errors in reported reason for confidentiality were found:

Facility	Medium	Pollutant	Method basis	Method(s)	Tot. quantity	Acc. quantity	Confidential	Reason for conf.
no-conf	WATER	-	0	WEIGH	17.0	22.00	No	A42a
conf	WATER	CO2	C	-Not reported-	17.0	2.00	Yes	-Not reported-
conf	LAND	CO2	M	-Not reported-	17.0	2.00	Yes	A42a

Check#	Warning	Description of the warning.
9	[Facility Details]	Facilities with an incorrect Web site format listed in a table.

Sample XML

```

    <rsm:FacilityName>Bunlicky Waste Water Treatment Plant</rsm:FacilityName>
    <▼rsm:GeographicalCoordinate>
      <rsm:LongitudeMeasure>-8.67025</rsm:LongitudeMeasure>
      <rsm:LatitudeMeasure>52.6500</rsm:LatitudeMeasure>
    </rsm:GeographicalCoordinate>
    <rsm:RiverBasinDistrictID>IEGBNISH</rsm:RiverBasinDistrictID>
    <rsm:NACEMainEconomicActivityCode>37.00</rsm:NACEMainEconomicActivityCode>
    <rsm:MainEconomicActivityName>Sewerage</rsm:MainEconomicActivityName>
    <rsm:CompetentAuthorityPartyName>Environmental Protection Agency</rsm:CompetentAuthorityPartyName>
    <rsm>TotalIPPCInstallationQuantity>1</rsm>TotalIPPCInstallationQuantity>
    <rsm:OperationHours>8760</rsm:OperationHours>
    <rsm>TotalEmployeeQuantity>4</rsm>TotalEmployeeQuantity>
    <rsm:NutsRegionID>IE023</rsm:NutsRegionID>
    <▼rsm:WebsiteCommunication>
      <rsm:WebsiteURIID>ww</rsm:WebsiteURIID>
    </rsm:WebsiteCommunication>
    <rsm:ConfidentialIndicator>false</rsm:ConfidentialIndicator>
    <rsm:ProtectVoluntaryData>>true</rsm:ProtectVoluntaryData>
  </rsm:FacilityReport>
  
```

Incorrect Website URL

Result

Controlled web site format

A web site must begin with 'http://'.

The following facilities with illegal web site format were found:

National ID	Facility name	Parent company	Address	Longitude	Latitude	Web site	Confidential
D0013	Bunlicky Waste Water Treatment Plant	Environmental Protection Agency - Limerick City Council	-Not reported-	-8.67025	52.6500	ww	No

3.2.1.3.3 Competent Authorities Validation

1. The **Duplicate Competent Authority Check** checks if more than one Competent Authorities with same name have been reported.
2. The **Email Address Check** checks if competent authority email address format is correct if entered.

Checks in this rule:

Check#	Warning	Description of the warning.
1	[Competent Authority Details]	Duplicate Competent Authority details listed in a table.

Sample XML

```
▼<rsm:CompetentAuthorityParty>
  <rsm:Name>Umweltbundesamt</rsm:Name>
  ▶<rsm:Address>...</rsm:Address>
  ▶<rsm:TelephoneCommunication>...</rsm:TelephoneCommunication>
  ▶<rsm:FaxCommunication>...</rsm:FaxCommunication>
  ▶<rsm:EmailCommunication>...</rsm:EmailCommunication>
  <rsm:ContactPersonName>Peter Kaufmann</rsm:ContactPersonName>
</rsm:CompetentAuthorityParty>
▼<rsm:CompetentAuthorityParty>
  <rsm:Name>Umweltbundesamt</rsm:Name>
  ▶<rsm:Address>...</rsm:Address>
  ▶<rsm:TelephoneCommunication>...</rsm:TelephoneComm
  ▶<rsm:FaxCommunication>...</rsm:FaxCommunication>
  ▶<rsm:EmailCommunication>...</rsm:EmailCommunication>
  <rsm:ContactPersonName>Peter Kaufmann</rsm:ContactPersonName>
</rsm:CompetentAuthorityParty>
```

Two Authorities with the same name

Check#	Warning	Description of the warning.				
Result						
Controlled for duplicates						
A specific name of an authority is not allowed to be reported more than once.						
The following duplicates were found:						
	Name	Address	Telephone No	Fax No	E-mail	Contact person
	Umweltbundesamt	Wörlitzer Platz 1, Dessau-Roßlau, -	+49 1234567-8900	-	-	Peter Kaufmann
	Umweltbundesamt	Wörlitzer Platz 1 1, Dessau-Roßlau, 0	+49 1234567-8900	+49 1234567-8901	peter.kaufmann@uba.de	Peter Kaufmann

Check#	Warning	Description of the warning.
2	[Competent Authority Details]	Competent Authorities with an incorrect e-mail format listed in a table.

Sample XML

```

<rsm:CompetentAuthorityParty>
  <rsm:Name>Umweltbundesamt</rsm:Name>
  <rsm:Address>
    <rsm:StreetName>Wörlitzer Platz</rsm:StreetName>
    <rsm:BuildingNumber>1</rsm:BuildingNumber>
    <rsm:CityName>Dessau-Roßlau</rsm:CityName>
    <rsm:PostcodeCode>-</rsm:PostcodeCode>
  </rsm:Address>
  <rsm:TelephoneCommunication>
    <rsm:CompleteNumberText>+49 1234567-8900</rsm:CompleteNumberText>
  </rsm:TelephoneCommunication>
  <rsm:FaxCommunication>
    <rsm:CompleteNumberText>-</rsm:CompleteNumberText>
  </rsm:FaxCommunication>
  <rsm:EmailCommunication>
    <rsm:EmailURIID>-</rsm:EmailURIID>
  </rsm:EmailCommunication>
  <rsm:ContactPersonName>Peter Kaufmann</rsm:ContactPersonName>
</rsm:CompetentAuthorityParty>

```

Incorrect e-mail address

Result

Illegal e-mail format

An e-mail address must contain an @.

The following competent authorities with illegal e-mail format were found:

Name	Address	Telephone No	Fax No	E-mail	Contact person
Umweltbundesamt	Wörlitzer Platz 1, Dessau-Roßlau, -	+49 1234567-8900	-	-	Peter Kaufmann

3.2.1.3.4 Validation of Pollutant Releases

Purpose: This validation examines if data in Pollutant Release elements is correct.

1. The **Illegal Codes Check** checks if all Pollutant Codes are present in the Code list. Pollutant Group Codes must be reported for Confidential Items.
2. The **Digits Checks** check if numeric format of the following amount fields is legal: *Total Quantity, Accidental Quantity*
3. The **Total Quantity Check** checks if *Total Quantity* is not smaller than *Accidental Quantity*.
4. The **Mandatory Check** checks if Method Code is entered for a not confidential Pollutant Release.
5. The **Missing Designation Check** checks if Designation is entered for required not confidential methods.
6. The **Illegal Method Type Check** checks if any Pollutant Release has been reported with *Method Type Code "WEIGH"*.
7. The **Duplicate Check** checks if any duplicate Pollutant Release exists (same *Pollutant Code* and *Medium Code*)
8. The **Confidential Pollutant Check** checks if a Confidential Pollutant Release is entered without *Confidential Code* or incorrect *Confidential Code*, or if a Pollutant Release with *Confidential Code* has no *Confidential Indicator* set.

Checks in this rule:

Check#	Warning	Description of the warning.
1	[Illegal code] [Pollutant Data]	Illegal use of pollutant code is displayed in a table
Sample XML		

Check#	Warning	Description of the warning.																																													
		<pre> ▼<rsm:FacilityReport> <rsm:NationalID>conf</rsm:NationalID> ▼<rsm:PreviousNationalID> <rsm:NationalID>abc</rsm:NationalID> <rsm:ReportingYear>2004</rsm:ReportingYear> </rsm:PreviousNationalID> <rsm:ParentCompanyName/> <rsm:FacilityName/> ▶<rsm:Address>...</rsm:Address> ▶<rsm:GeographicalCoordinate>...</rsm:GeographicalCoordinate> <rsm:RiverBasinDistrictID>DE2000</rsm:RiverBasinDistrictID> <rsm:NACEMainEconomicActivityCode>24.10</rsm:NACEMainEconomicActivityCode> <rsm:MainEconomicActivityName/> <rsm:CompetentAuthorityPartyName>Umweltbundesamt</rsm:CompetentAuthorityPartyName> ▶<rsm:ProductionVolume>...</rsm:ProductionVolume> <rsm:TotalIPPCInstallationQuantity>2</rsm:TotalIPPCInstallationQuantity> <rsm:OperationHours>7816</rsm:OperationHours> <rsm:TotalEmployeeQuantity>68</rsm:TotalEmployeeQuantity> <rsm:NutsRegionID>DE22A</rsm:NutsRegionID> ▶<rsm:WebsiteCommunication>...</rsm:WebsiteCommunication> <rsm:ConfidentialIndicator>true</rsm:ConfidentialIndicator> <rsm:ConfidentialCode/> <rsm:ProtectVoluntaryData>false</rsm:ProtectVoluntaryData> ▶<rsm:Activity>...</rsm:Activity> ▼<rsm:PollutantRelease> <rsm:MediumCode>WATER</rsm:MediumCode> <rsm:PollutantCode>CO2</rsm:PollutantCode> <rsm:MethodBasisCode>C</rsm:MethodBasisCode> </pre>																																													
		<div style="border: 1px solid red; padding: 2px; display: inline-block;">Confidentiality claimed</div>																																													
		<div style="border: 1px solid red; padding: 2px; display: inline-block;">Not a group code</div>																																													
Result																																															
Controlled pollutantCodes																																															
<p>If confidentiality is claimed for releases of pollutants, the pollutant group (e.g. heavy metals) must be reported instead of the individual pollutant (e.g. Pb). If confidentiality is not claimed, pollutant codes corresponding to pollutant groups are not allowed.</p> <p>The following illegal pollutant codes were found:</p>																																															
<table border="1"> <thead> <tr> <th>Facility</th> <th>Medium</th> <th>Pollutant</th> <th>Method basis</th> <th>Method(s)</th> <th>Tot. quantity</th> <th>Acc. quantity</th> <th>Confidential</th> <th>Reason for conf.</th> </tr> </thead> <tbody> <tr> <td>conf</td> <td>WATER</td> <td>CO2</td> <td>C</td> <td>-Not reported-</td> <td>17.0</td> <td>2.00</td> <td>Yes</td> <td>-Not reported-</td> </tr> <tr> <td>conf</td> <td>LAND</td> <td>CO2</td> <td>M</td> <td>-Not reported-</td> <td>17.0</td> <td>2.00</td> <td>Yes</td> <td>A42a</td> </tr> <tr> <td>conf</td> <td>AIR</td> <td>CO2</td> <td>E</td> <td>-Not reported-</td> <td>17.0</td> <td>2.00</td> <td>Yes</td> <td>A42b</td> </tr> <tr> <td>no-conf</td> <td>WATER</td> <td>-</td> <td>0</td> <td>-Not reported-</td> <td>17.0</td> <td>2.00</td> <td>No</td> <td>A42a</td> </tr> </tbody> </table>			Facility	Medium	Pollutant	Method basis	Method(s)	Tot. quantity	Acc. quantity	Confidential	Reason for conf.	conf	WATER	CO2	C	-Not reported-	17.0	2.00	Yes	-Not reported-	conf	LAND	CO2	M	-Not reported-	17.0	2.00	Yes	A42a	conf	AIR	CO2	E	-Not reported-	17.0	2.00	Yes	A42b	no-conf	WATER	-	0	-Not reported-	17.0	2.00	No	A42a
Facility	Medium	Pollutant	Method basis	Method(s)	Tot. quantity	Acc. quantity	Confidential	Reason for conf.																																							
conf	WATER	CO2	C	-Not reported-	17.0	2.00	Yes	-Not reported-																																							
conf	LAND	CO2	M	-Not reported-	17.0	2.00	Yes	A42a																																							
conf	AIR	CO2	E	-Not reported-	17.0	2.00	Yes	A42b																																							
no-conf	WATER	-	0	-Not reported-	17.0	2.00	No	A42a																																							
Check#	Warning	Description of the warning.																																													
2	[Pollutant Release Details]	Table of invalid pollutant release elements. Invalid numbers are marked in red.																																													

Check#	Warning	Description of the warning.
Sample XML		
<pre> ▼<rsm:MethodUsed> <rsm:MethodTypeCode>CEN/ISO</rsm:MethodTypeCode> <rsm:Designation>EN ISO 6878:2004</rsm:Designation> </rsm:MethodUsed> <rsm:TotalQuantity>17.0.</rsm:TotalQuantity> <rsm:ConfidentialIndicator>false</rsm:ConfidentialIndicator> </rsm:PollutantRelease> </pre>		

Incorrect number

Result

Controlled reported digits of total quantity

The total quantity of a pollutant release must be reported with three significant digits.

The following pollutant releases with illegal total quantity were found:

Facility	Medium	Pollutant	Method basis	Method(s)	Tot. quantity	Acc. quantity	Confidential	Reason for conf.
no-conf	LAND	TOTAL - PHOSPHORUS	M	CEN/ISO - EN ISO 6878:2004	17.0.	-Not reported-	No	-Not reported-

Check#	Warning	Description of the warning.
3	[Pollutant Release Details]	Table of invalid pollutant release elements. Invalid accidental quantity is marked in red.

Sample XML

```

▼<rsm:MethodUsed>
  <rsm:MethodTypeCode>WEIGH</rsm:MethodTypeCode>
  <rsm:Designation/>
</rsm:MethodUsed>
<rsm:TotalQuantity>17.0.</rsm:TotalQuantity>
<rsm:AccidentalQuantity>22.00</rsm:AccidentalQuantity>
<rsm:ConfidentialIndicator>false</rsm:ConfidentialIndicator>
<rsm:ConfidentialCode>A42a</rsm:ConfidentialCode>
</rsm:PollutantRelease>

```

Accidental Quantity is greater than Total Quantity

Check#	Warning	Description of the warning.																		
Result																				
<p>Controlled reported digits of accidental quantity</p> <p>The accidental quantity of a pollutant release must be reported with three significant digits.</p> <p>The following pollutant releases with illegal accidental quantity were found:</p> <table border="1"> <thead> <tr> <th>Facility</th> <th>Medium</th> <th>Pollutant</th> <th>Method basis</th> <th>Method(s)</th> <th>Tot. quantity</th> <th>Acc. quantity</th> <th>Confidential</th> <th>Reason for conf.</th> </tr> </thead> <tbody> <tr> <td>no-conf</td> <td>WATER</td> <td>-</td> <td>0</td> <td>WEIGH</td> <td>17.0</td> <td>22.00</td> <td>No</td> <td>A42a</td> </tr> </tbody> </table>			Facility	Medium	Pollutant	Method basis	Method(s)	Tot. quantity	Acc. quantity	Confidential	Reason for conf.	no-conf	WATER	-	0	WEIGH	17.0	22.00	No	A42a
Facility	Medium	Pollutant	Method basis	Method(s)	Tot. quantity	Acc. quantity	Confidential	Reason for conf.												
no-conf	WATER	-	0	WEIGH	17.0	22.00	No	A42a												
Check#																				
Warning																				
Description of the warning.																				
4	[Pollutant Release Details]	Table of pollutant release elements without method type code. Designation is marked in red if exists.																		
Sample XML																				
<pre> <rsm:PollutantRelease> <rsm:MediumCode>LAND</rsm:MediumCode> <rsm:PollutantCode>TOTAL - PHOSPHORUS</rsm:PollutantCode> <rsm:MethodBasisCode>M</rsm:MethodBasisCode> <rsm:MethodUsed> <rsm:MethodTypeCode/> <rsm:Designation>EN ISO 6878:2004</rsm:Designation> </rsm:MethodUsed> <rsm:TotalQuantity>17.0</rsm:TotalQuantity> <rsm:ConfidentialIndicator>>false</rsm:ConfidentialIndicator> </rsm:PollutantRelease> </pre> <div style="border: 2px solid red; border-radius: 10px; padding: 5px; display: inline-block; margin-left: 200px;">Empty method type code</div>																				
Result																				
<p>Controlled mandatory data</p> <p>For method basis 'M' or 'C' at least one method for determining the reported quantity must be given unless claiming confidentiality.</p> <p>The following pollutant releases with missing mandatory data were found:</p> <table border="1"> <thead> <tr> <th>Facility</th> <th>Medium</th> <th>Pollutant</th> <th>Method basis</th> <th>Method(s)</th> <th>Tot. quantity</th> <th>Acc. quantity</th> <th>Confidential</th> <th>Reason for conf.</th> </tr> </thead> <tbody> <tr> <td>no-conf</td> <td>LAND</td> <td>TOTAL - PHOSPHORUS</td> <td>M</td> <td>EN ISO 6878:2004</td> <td>17.0</td> <td>-Not reported-</td> <td>No</td> <td>-Not reported-</td> </tr> </tbody> </table>			Facility	Medium	Pollutant	Method basis	Method(s)	Tot. quantity	Acc. quantity	Confidential	Reason for conf.	no-conf	LAND	TOTAL - PHOSPHORUS	M	EN ISO 6878:2004	17.0	-Not reported-	No	-Not reported-
Facility	Medium	Pollutant	Method basis	Method(s)	Tot. quantity	Acc. quantity	Confidential	Reason for conf.												
no-conf	LAND	TOTAL - PHOSPHORUS	M	EN ISO 6878:2004	17.0	-Not reported-	No	-Not reported-												
Check#																				
Warning																				
Description of the warning.																				
5	[Pollutant Release Details]	Table of invalid pollutant release elements without required designation																		

Check#	Warning	Description of the warning.
		<p>Sample XML</p> <pre> ▼<rsm:PollutantRelease> <rsm:MediumCode>LAND</rsm:MediumCode> <rsm:PollutantCode>CO2</rsm:PollutantCode> <rsm:MethodBasisCode>-</rsm:MethodBasisCode> ▼<rsm:MethodUsed> <rsm:MethodTypeCode>IPCC</rsm:MethodTypeCode> <rsm:Designation/> </rsm:MethodUsed> <rsm:TotalQuantity>17.0</rsm:TotalQuantity> <rsm:AccidentalQuantity>2.00</rsm:AccidentalQuantity> <rsm:ConfidentialIndicator>>false</rsm:ConfidentialIndicator> </rsm:PollutantRelease> </pre> <p>Designation is mandatory for IPCC</p>

Result

Controlled missing reporting of method designation

For some method types a designation of the method is required. The following methods are missing a designation:

Facility	Medium	Pollutant	Method basis	Method type	Designation
no-conf	LAND	CO2	-	IPCC	-Not reported-

Check#	Warning	Description of the warning.
6	[Pollutant Release Details]	Table of invalid pollutant release elements.
		<p>Sample XML</p> <pre> ▼<rsm:PollutantRelease> <rsm:MediumCode>WATER</rsm:MediumCode> <rsm:PollutantCode>-</rsm:PollutantCode> <rsm:MethodBasisCode>0</rsm:MethodBasisCode> ▼<rsm:MethodUsed> <rsm:MethodTypeCode>WEIGH</rsm:MethodTypeCode> <rsm:Designation/> </rsm:MethodUsed> <rsm:TotalQuantity>17.0</rsm:TotalQuantity> <rsm:AccidentalQuantity>22.00</rsm:AccidentalQuantity> <rsm:ConfidentialIndicator>>false</rsm:ConfidentialIndicator> <rsm:ConfidentialCode>A42a</rsm:ConfidentialCode> </rsm:PollutantRelease> </pre> <p>WEIGH is not allowed</p>

Check#	Warning	Description of the warning.			
Result					
Controlled illegal method types					
The method type weighing (WEIGH) is not allowed for pollutant releases. The following illegal method types were found:					
Facility	Medium	Pollutant	Method basis	Method type	Designation
no-conf	WATER	-	0	WEIGH	-Not reported-

Check#	Warning	Description of the warning.
7	[Pollutant Release Details]	Duplicate pollutant releases

Sample XML

```

▼<rsm:PollutantRelease>
  <rsm:MediumCode>LAND</rsm:MediumCode>
  <rsm:PollutantCode>TOTAL - PHOSPHORUS</rsm:PollutantCode>
  <rsm:MethodBasisCode>M</rsm:MethodBasisCode>
  ▼<rsm:MethodUsed>
    <rsm:MethodTypeCode>CEN/ISO</rsm:MethodTypeCode>
    <rsm:Designation>EN ISO 6878:2004</rsm:Designation>
  </rsm:MethodUsed>
  <rsm:TotalQuantity>17.0.</rsm:TotalQuantity>
  <rsm:ConfidentialIndicator>>false</rsm:ConfidentialIndicator>
</rsm:PollutantRelease>
▼<rsm:PollutantRelease>
  <rsm:MediumCode>AIR</rsm:MediumCode>
  <rsm:PollutantCode>TOTAL - PHOSPHORUS</rsm:PollutantCode>
  <rsm:MethodBasisCode>M</rsm:MethodBasisCode>
  ▼<rsm:MethodUsed>
    <rsm:MethodTypeCode>CEN/ISO</rsm:MethodTypeCode>
    <rsm:Designation>EN ISO 6878:2004</rsm:Designation>
  </rsm:MethodUsed>
  <rsm:AccidentalQuantity>2.00</rsm:AccidentalQuantity>
  <rsm:ConfidentialIndicator>>false</rsm:ConfidentialIndicator>
</rsm:PollutantRelease>
▼<rsm:PollutantRelease>
  <rsm:MediumCode>LAND</rsm:MediumCode>
  <rsm:PollutantCode>TOTAL - PHOSPHORUS</rsm:PollutantCode>
  <rsm:MethodBasisCode>M</rsm:MethodBasisCode>
  ▼<rsm:MethodUsed>
    <rsm:MethodTypeCode/>
    <rsm:Designation>EN ISO 6878:2004</rsm:Designation>
  </rsm:MethodUsed>
  <rsm:TotalQuantity>17.0</rsm:TotalQuantity>
  <rsm:ConfidentialIndicator>>false</rsm:ConfidentialIndicator>
</rsm:PollutantRelease>

```

Duplicate LAND for TOTAL-PHOSPHORUS

Check#	Warning	Description of the warning.						
Result								
Controlled for duplicates								
A pollutant is not allowed to be reported more than once for a given medium (air, water, land).								
The following duplicates were found:								
Facility	Medium	Pollutant	Method basis	Method(s)	Tot. quantity	Acc. quantity	Confidential	Reason for conf.
no-conf	LAND	TOTAL - PHOSPHORUS	M	CEN/ISO - EN ISO 6878:2004	17.0	-Not reported-	No	-Not reported-
no-conf	LAND	TOTAL - PHOSPHORUS	M	EN ISO 6878:2004	17.0	-Not reported-	No	-Not reported-
Check#	Warning	Description of the warning.						
8	[Pollutant Release Details]	Table of pollutant release elements missing Confidential Information						
Sample XML								
<pre> <rsm:PollutantRelease> <rsm:MediumCode>WATER</rsm:MediumCode> <rsm:PollutantCode>--</rsm:PollutantCode> <rsm:MethodBasisCode>0</rsm:MethodBasisCode> <rsm:MethodUsed> <rsm:MethodTypeCode>WEIGH</rsm:MethodTypeCode> <rsm:Designation/> </rsm:MethodUsed> <rsm:TotalQuantity>17.0</rsm:TotalQuantity> <rsm:AccidentalQuantity>22.00</rsm:AccidentalQuantity> <rsm:ConfidentialIndicator>false</rsm:ConfidentialIndicator> <rsm:ConfidentialCode>A42a</rsm:ConfidentialCode> </rsm:PollutantRelease> </pre>								
		No confidentiality claimed and ConfidentialityCode exists						
Result								
Controlled reason for confidentiality								
When claiming confidentiality the reason must be reported. For pollutant releases the legal reasons for confidentiality are restricted to Article 4(2)(b), (c) and (e). For non-confident pollutant releases no reason must be reported.								
The following errors in reported reason for confidentiality were found:								
Facility	Medium	Pollutant	Method basis	Method(s)	Tot. quantity	Acc. quantity	Confidential	Reason for conf.
no-conf	WATER	-	0	WEIGH	17.0	22.00	No	A42a
conf	WATER	CO2	C	-Not reported-	17.0	2.00	Yes	-Not reported-
conf	LAND	CO2	M	-Not reported-	17.0	2.00	Yes	A42a

3.2.1.3.5 Validation of Pollutant Transfers

Purpose: This validation examines if data in Pollutant Transfer elements is correct.

1. The **Illegal Codes Check** checks if all Pollutant Codes are present in the Code list. Pollutant Group Codes must be reported for Confidential Items.
2. The **Digits Checks** check if numeric format of *Total Quantity* is legal.

3. The **Mandatory Check** checks if Method Code is entered for a not confidential Pollutant Transfer.
4. The **Missing Designation Check** checks if Designation is entered for required not confidential methods.
5. The **Illegal Method Type Check** checks if any method has an incorrect *Method Type Code*.
6. The **Duplicate Check** checks if any duplicate Pollutant Transfer exists (same Pollutant Code and Medium Code)
7. The **Confidential Pollutant Check** checks if a Confidential Pollutant Transfer is entered without *Confidential Code* or incorrect *Confidential Code*, or if a Pollutant Transfer with *Confidential Code* has no *Confidential Indicator* set.

All the rules in this section are similar to Pollutant Release checks. Please see the examples above.

3.2.1.3.6 Validation of Waste Transfers

Purpose: This validation examines if data in Waste Transfer elements is correct.

1. The **Waste Handler Check** checks if there exist non confidential Waste Transfer (Type=HWOC) elements with without Waste Handlers, or other type elements with Waste Handlers
2. The **Mandatory Check** checks if Mandatory Data (Waste Treatment Code, Quantity, Method Basis Code, Methods Used) is entered for the Waste Transfer element and Mandatory data is entered for Waste Handler element if this must exist. The following fields must be filled for a Waste Handler *Address* and *SiteAddress* elements: *Street*, *City*, *Post Code*, *Country*
3. The **Missing Designation Check** checks if Designation is entered for required not confidential methods.
4. The **Digits Checks** check if numeric format of *Quantity* is legal.
5. The **Confidential Check** checks if a Confidential *Waste Transfer* element is entered without *Confidential Code* or incorrect *Confidential Code*, or if a Waste Transfer with *Confidential Code* has no *Confidential Indicator* set.

Checks in this rule:

Check#	Warning	Description of the warning.
1	[Waste Transfer Details]	Table of pollutant release elements without method type code. Designation is marked in red if exists.

Check#	Warning	Description of the warning.																																				
Sample XML																																						
<pre> ▼ <rsm:WasteTransfer> <rsm:WasteTypeCode>HWOC</rsm:WasteTypeCode> <rsm:WasteTreatmentCode>R</rsm:WasteTreatmentCode> <rsm:Quantity>15.0</rsm:Quantity> <rsm:MethodBasisCode>M</rsm:MethodBasisCode> <rsm:ConfidentialIndicator>>false</rsm:ConfidentialIndicator> ▼ <rsm:WasteHandlerParty> <rsm:Address></rsm:Address> <rsm:SiteAddress></rsm:SiteAddress> </rsm:WasteHandlerParty> </rsm:WasteTransfer> </pre>																																						
		<p>No Waste Handler specified for HWOC</p>																																				
Result																																						
Controlled for missing/illegal recoverer/disposer																																						
<p>For HW transfer outside the country, the recoverer/disposer must always be reported unless claiming confidentiality. For other waste types a recoverer/disposer must never be reported.</p> <p>The following transfers of waste with missing/illegal reporting of recoverer/disposer were found:</p>																																						
<table border="1"> <thead> <tr> <th>Facility</th> <th>Waste type</th> <th>Quantity</th> <th>Waste treatment</th> <th>Method Basis</th> <th>Method(s)</th> <th>Confidential</th> <th>Reason for conf.</th> <th>Recoverer/disposer</th> </tr> </thead> <tbody> <tr> <td>no-conf</td> <td>HWOC</td> <td>15.0</td> <td>D</td> <td>M</td> <td>-Not reported-</td> <td>No</td> <td>-Not reported-</td> <td>No</td> </tr> <tr> <td>no-conf</td> <td>HWOC</td> <td>18.0</td> <td>D</td> <td>M</td> <td>OTH</td> <td>No</td> <td>-Not reported-</td> <td>No</td> </tr> <tr> <td>no-conf</td> <td>HWIC</td> <td>-Not reported-</td> <td>-Not reported-</td> <td>C</td> <td>-Not reported-</td> <td>No</td> <td>-Not reported-</td> <td>Yes</td> </tr> </tbody> </table>			Facility	Waste type	Quantity	Waste treatment	Method Basis	Method(s)	Confidential	Reason for conf.	Recoverer/disposer	no-conf	HWOC	15.0	D	M	-Not reported-	No	-Not reported-	No	no-conf	HWOC	18.0	D	M	OTH	No	-Not reported-	No	no-conf	HWIC	-Not reported-	-Not reported-	C	-Not reported-	No	-Not reported-	Yes
Facility	Waste type	Quantity	Waste treatment	Method Basis	Method(s)	Confidential	Reason for conf.	Recoverer/disposer																														
no-conf	HWOC	15.0	D	M	-Not reported-	No	-Not reported-	No																														
no-conf	HWOC	18.0	D	M	OTH	No	-Not reported-	No																														
no-conf	HWIC	-Not reported-	-Not reported-	C	-Not reported-	No	-Not reported-	Yes																														

The checks (#2 - #5) are similar to the checks in the two chapters above, please see the examples in Pollutant Releases chapter.

3.2.1.4 Compliance Validation sorted by facilities

Purpose: This validation performs the same checks than listed in the 2 chapters above. The output is sorted by facilities.

The rule performs the same checks as described in Compliance Check above. The results are displayed in one table and sorted by facilities.

4. Compliance Validation sorted by facilities

This report shows the results of the validation rules for compliance checking as indicated in the validation manual available at <http://www.eionet.europa.eu/schemas/eprtr/>. The code lists for E-PRTR are available at the same address.

[Show Details](#)

The test failed!

National ID	Facility Details				(1) Codes	(2) Facility Reports	(3) PollutantReleases	(4) Pollutant Transfers	(5) WasteTransfers
	Facility Name	Parent Company	Address	Competent Authority					
no-conf				Umweltbundesamt2	Illegal AnnexIAActivityCode Illegal MethodBasicCode Illegal PollutantCodes	Controlled for non-existing competent authorities Missing mandatory data	LAND/TOTAL - PHOSPHORUS: Illegal total quantity WATER/-: Illegal accidental quantity WATER/-: Total quantity below accidental quantity LAND/TOTAL - PHOSPHORUS: Missing mandatory data WATER/-: Illegal method types LAND/TOTAL - PHOSPHORUS: Controlled for duplicates LAND/TOTAL - PHOSPHORUS: Controlled for duplicates WATER/-: Controlled reason for confidentiality	HFCS: Missing mandatory data N2O: Missing mandatory data	HWOC/R: Missing mandatory data HWOC/D: Missing mandatory data HWOC/I: Missing mandatory data HWIC: Missing mandatory data NON-HW/D: Missing mandatory data
conf				Umweltbundesamt	Illegal WasteTypeCode	Controlled reason for confidentiality	WATER/CO2: Controlled reason for confidentiality LAND/CO2: Controlled reason for confidentiality	TOTAL - PHOSPHORUS: Controlled reason for confidentiality	nohitng eafdsa/R: Controlled reason for confidentiality

3.2.2 Additional validation

Purpose: This validation report warnings in case of the following cases:

1. **Facilities with neither releases/transfer** of pollutants nor transfer of waste.
2. **Facilities with releases/transfer** of pollutants or transfer of waste **below threshold**
3. **Facilities with only releases/transfer** of pollutants or transfer of waste below threshold
4. Check results #1 – #3 presented in aggregated table sorted by facilities

It should be noted that releases/transfers below thresholds may be reported voluntarily.

For pollutants, the threshold values depend on the medium of the emission (air, land, etc.), see [1].

For waste transfers, the threshold values depend on whether the waste is hazardous or not. For hazardous waste it should be noted that the threshold counts for the total

quantity of waste whether it is treated within the country or transferred to another country.

Checks in this rule:

Check#	Warning	Description of the warning.
1	[Reported value]	This validation examines if any facilities without any releases/transfers have been reported.

Sample XML

```

- <rsm:FacilityReport>
  <rsm:NationalID>II1234</rsm:NationalID>
  - <rsm:PreviousNationalID>
    <rsm:NationalID>II1234</rsm:NationalID>
    <rsm:ReportingYear>2007</rsm:ReportingYear>
  </rsm:PreviousNationalID>
  <rsm:ParentCompanyName>Company Ltd.</rsm:ParentCompanyName>
  <rsm:FacilityName>Some facility</rsm:FacilityName>
  - <rsm:Address>
    <rsm:StreetName>Lightning</rsm:StreetName>
    <rsm:BuildingNumber>Dublin</rsm:BuildingNumber>
    <rsm:CityName>.</rsm:CityName>
    <rsm:PostcodeCode>.</rsm:PostcodeCode>
  </rsm:Address>
  - <rsm:GeographicalCoordinate>
    <rsm:LongitudeMeasure>-6.19696062899993</rsm:LongitudeMeasure>
    <rsm:LatitudeMeasure>53.4372979720001</rsm:LatitudeMeasure>
  </rsm:GeographicalCoordinate>
  <rsm:RiverBasinDistrictID>IEEA</rsm:RiverBasinDistrictID>
  <rsm:NACEMainEconomicActivityCode>08.11</rsm:NACEMainEconomicActivityCode>
  <rsm:MainEconomicActivityName/>
  <rsm:CompetentAuthorityPartyName>Environmental Protection Agency</rsm:CompetentA
  <rsm>TotalIPPCInstallationQuantity>0</rsm>TotalIPPCInstallationQuantity>
  <rsm:OperationHours>0</rsm:OperationHours>
  <rsm>TotalEmployeeQuantity>0</rsm>TotalEmployeeQuantity>
  <rsm:NutsRegionID>EE021</rsm:NutsRegionID>
  <rsm:ConfidentialIndicator>>false</rsm:ConfidentialIndicator>
  <rsm:ProtectVoluntaryData>>true</rsm:ProtectVoluntaryData>
  - <rsm:Activity>
    <rsm:RankingNumeric>1</rsm:RankingNumeric>
    <rsm:AnnexIActivityCode>3.(b)</rsm:AnnexIActivityCode>
  </rsm:Activity>
</rsm:FacilityReport>

```

No Pollutant releases/transfers or Waste transfers reported

Result

1. Facility reports without releases or transfers

This validation examines if any facilities without any releases/transfers have been reported.

The following facilities have no reporting of releases/transfers:

National ID	Facility name	Parent company	Address	Confidential	Reason for conf.	Comp. Authority
II1234	Some facility	Company Ltd.	Lightning Dublin, ...	No	-Not reported-	Environmental Protection Agency

Check#	Warning	Description of the warning.
2	[Reported value]	This validation examines if any facilities without any releases/transfers

have been reported. The results for pollutant releases, pollutant transfers and waste transfers are presented in different tables.

Sample XML

```

- <rsm:Activity>
  <rsm:RankingNumeric>1</rsm:RankingNumeric>
  <rsm:AnnexIActivityCode>5.(f)</rsm:AnnexIActivityCode>
</rsm:Activity>
- <rsm:PollutantRelease>
  <rsm:MediumCode>WATER</rsm:MediumCode>
  <rsm:PollutantCode>TOTAL - NITROGEN</rsm:PollutantCode>
- <rsm:MethodUsed>
  <rsm:MethodBasisCode>M</rsm:MethodBasisCode>
  <rsm:MethodTypeCode>CEN/ISO</rsm:MethodTypeCode>
  <rsm:Designation>EPA WWTP Tool V2.0</rsm:Designation>
</rsm:MethodUsed>
  <rsm:TotalQuantity>0.0000136</rsm:TotalQuantity>
  <rsm:AccidentalQuantity>0.00</rsm:AccidentalQuantity>
  <rsm:ConfidentialIndicator>>false</rsm:ConfidentialIndicator>
</rsm:PollutantRelease>

```

Quantity value much lower than threshold

Result

2.1 Pollutant releases below the threshold

Pollutant releases below threshold are considered voluntary reported.

An hyphen in E-PRTR Regulation Annex II indicates that the parameter and medium in question do not trigger a reporting requirements.

If confidentiality is claimed the amounts for groups of pollutants are reported instead of the individual pollutants. For each of the pollutants in the group different thresholds apply. Therefore it is assumed that as soon as confidentiality is claimed, the reported amount for a group of pollutants is above the threshold.

The following pollutant releases are considered voluntary reported (i.e. below threshold or no reporting requirements):

Facility	Medium	Pollutant	Tot. quantity	Threshold
D0013	WATER	TOTAL - NITROGEN	0.0000136	50000
D0013	WATER	DIELDRIN	0.000434	1
D0013	WATER	ISODRIN	0.0000000000123	1

Check#	Warning	Description of the warning.
3	[Facility ID]	This validation examines if any facilities reports ONLY voluntary releases/transfers. The results for pollutant releases, pollutant transfers and waste transfers are presented in different tables.

Sample XML

```

- <rsm:Activity>
  <rsm:RankingNumeric>1</rsm:RankingNumeric>
  <rsm:AnnexIActivityCode>4.(e)</rsm:AnnexIActivityCode>
</rsm:Activity>
- <rsm:PollutantRelease>
  <rsm:MediumCode>AIR</rsm:MediumCode>
  <rsm:PollutantCode>CO2</rsm:PollutantCode>
  <rsm:MethodBasisCode>E</rsm:MethodBasisCode>
  <rsm:TotalQuantity unitCode="TGM">491</rsm:TotalQuantity>
  <rsm:AccidentalQuantity unitCode="KGM">0.00</rsm:AccidentalQuantity>
  <rsm:ConfidentialIndicator>0</rsm:ConfidentialIndicator>
</rsm:PollutantRelease>
- <rsm:PollutantRelease>
  <rsm:MediumCode>AIR</rsm:MediumCode>
  <rsm:PollutantCode>N2O</rsm:PollutantCode>
  <rsm:MethodBasisCode>E</rsm:MethodBasisCode>
  <rsm:TotalQuantity unitCode="TGM">462</rsm:TotalQuantity>
  <rsm:AccidentalQuantity unitCode="KGM">0.00</rsm:AccidentalQuantity>
  <rsm:ConfidentialIndicator>0</rsm:ConfidentialIndicator>
</rsm:PollutantRelease>

```

All Quantity values lower than threshold – voluntary reporting

Result

2.1 Pollutant releases below the threshold

Pollutant releases below threshold are considered voluntary reported.

An hyphen in E-PRTR Regulation Annex II indicates that the parameter and medium in question do not trigger a reporting requirements.

If confidentiality is claimed the amounts for groups of pollutants are reported instead of the individual pollutants. For each of the pollutants in the group different thresholds apply. Therefore it is assumed that as soon as confidentiality is claimed, the reported amount for a group of pollutants is above the threshold.

The following pollutant releases are considered voluntary reported (i.e. below threshold or no reporting requirements):

Facility	Medium	Pollutant	Tot. quantity	Threshold
D0013	WATER	TOTAL - NITROGEN	0.0000136	50000
D0013	WATER	DIELDRIN	0.000434	1
D0013	WATER	ISODRIN	0.0000000000123	1

Check#	Warning	Description of the warning.
4	[Facility without any releases/transfers] [Voluntary reported] [ONLY Voluntary]	This is the aggregated check examining the same rules as #1 - #3 but presenting the results in a single table sorted by facilities.

Result

4. Additional validation sorted by facilities

(1) **Facility Reports:** This additional validation examines if any facilities without any releases/transfers have been reported. When the column has text "Facility without any releases/transfers.", it means that the National ID of that entry line has not reported releases or transfers.

(2) **Quantities below thresholds:** Member States might voluntarily report releases and transfers below the threshold. This validation examines if any values below the threshold have been reported. The result is provided by pollutant releases, pollutant transfers and waste transfers.

(3) **Facilities reporting only voluntary releases/transfers:** This validation examines if any facilities with only voluntary releases or transfers have been reported. When the column has text "ONLY Voluntary", then the facility has reported only pollutant releases, pollutant transfers or waste transfers respectively.

National ID	Facility Details				(1) Facility Reports	(2) Quantities below thresholds			(3) Facilities reporting ONLY voluntary releases/transfers		
	Facility Name	Parent Company	Address	Competent Authority		Pollutant Releases	Pollutant Transfers	Waste Transfers	Pollutant Releases	Pollutant Transfers	Waste Transfers
102	Dr. W. Kolb AG / Chemische Fabrik	Dr. W. Kolb AG	Maienbrunnenstrasse 1 / P.O. BOX 64 Hedingen 8908	BAFU		AIR/CO2: Voluntary reported AIR/NOX: Voluntary reported AIR/SOX: Voluntary reported	TOTAL - NITROGEN: Voluntary reported TOTAL - PHOSPHORUS: Voluntary reported TOTAL ORGANIC CARBON (TOC): Voluntary reported CHLORIDES: Voluntary reported		ONLY Voluntary	ONLY Voluntary	
103	CABB AG	CABB AG	Düngerstrasse 81 Pratteln 1 4133	BAFU				NON-HW: Voluntary			

3.2.3 Complementary Validation: Confidentiality

Purpose: Companies subject to reporting or competent authorities in the Member States can decide to classify parts of the mandatory data as confidential. The complementary validation on confidentiality checks if confidentiality has been claimed in any case and if mandatory data is reported correctly. Additionally they check which data are withheld. The confidentiality checks have been divided into the following groups:

1. **Check reporting of confidentiality reasons :** This complementary validation examines if a reason is provided for claiming confidentiality. If confidentiality is not claimed mandatory fields have to be reported.
2. **Information about confidentiality claims:** This validation examines if confidentiality has been claimed in any case and the validation returns information about reported values that could be withheld even though confidentiality was claimed.
3. **Information about confidentiality claims sorted by facilities:** This validation examines if confidentiality has been claimed for any facility and signals all cases where confidentiality is claimed sorted by facilities

Prerequisites: The following conditions must be observed:

- If Confidentiality has been claimed, a reason has to be provided.
- If Confidentiality has not been claimed on the facility name, facility details have to be provided when feasible.
- If Confidentiality has not been claimed on releases or transfers, the method and method designation have to be provided for ISO, CEN, UNECE/EMEP and IPCC standards and reference methods.

The tables below list the mandatory/voluntary method designation:

Pollutant Transfer

MethodBasisCode	MethodTypeCode	Designation
M	CEN/ISO	Mandatory
M	PER	Voluntary
M	NRB	Voluntary
M	ALT	Voluntary
M	CRM	Voluntary
M	OTH	Voluntary
C	ETS	Mandatory
C	IPCC	Mandatory
C	UNECE/EMEP	Mandatory
C	PER	Voluntary
C	NRB	Voluntary
C	MAB	Voluntary
C	SSC	Voluntary
C	OTH	Voluntary

Waste Transfer

MethodBasisCode	MethodTypeCode	Designation
M	WEIGH	Voluntary
C	PER	Voluntary

Checks in this rule:

Check#	Warning	Description of the warning.
1	[Not Reported]	<p>This complementary validation examines if a reason is provided for claiming confidentiality. If confidentiality is not claimed mandatory fields have to be reported:</p> <ul style="list-style-type: none"> • Facility Reports: if confidentiality is not claimed facility details have to be reported • Pollutant Releases / Pollutant releases / Waste transfers: If confidentiality is not claimed a method has to be reported.

Sample XML

```

<rsm:ConfidentialIndicator>true</rsm:ConfidentialIndicator>
<rsm:ProtectVoluntaryData>true</rsm:ProtectVoluntaryData>
- <rsm:Activity>
  <rsm:RankingNumeric>1</rsm:RankingNumeric>
  <rsm:AnnexIActivityCode>5.(f)</rsm:AnnexIActivityCode>
</rsm:Activity>

```

Confidentiality claimed, but reason not provided (ConfidentialityCode element is missing)

```

- <rsm:Activity>
  <rsm:RankingNumeric>1</rsm:RankingNumeric>
  <rsm:AnnexIAActivityCode>5.(f)</rsm:AnnexIAActivityCode>
</rsm:Activity>
- <rsm:PollutantRelease>
  <rsm:MediumCode>WATER</rsm:MediumCode>
  <rsm:PollutantCode>TOTAL - NITROGEN</rsm:PollutantCode>
  <rsm:MethodBasisCode>M</rsm:MethodBasisCode>
- <rsm:MethodUsed>
  <rsm:MethodTypeCode/>
  <rsm:Designation/>
</rsm:MethodUsed>
  <rsm:TotalQuantity>0.0000136</rsm:TotalQuantity>
  <rsm:AccidentalQuantity>0.00</rsm:AccidentalQuantity>
  <rsm:ConfidentialIndicator>false</rsm:ConfidentialIndicator>
</rsm:PollutantRelease>

```

Confidentiality NOT claimed and missing mandatory method value

Result

1.2 Pollutant Releases

This complementary validation examines if a reason is provided for claiming confidentiality on pollutant releases. If confidentiality is not claimed a method has to be reported.

Facility ID	Facility Details			Pollutant Releases						
	Facility Name	Parent Company	Address	Medium	Pollutant / Pollutant Group	Method Basis Code	Confidentiality	Confidentiality Reason	Method Type Code	Method Designation
D0013	Treatment Plant	City Council	srteet 12 Co. Limerick, -	WATER	TOTAL - NITROGEN	M	NO		-Not Reported-	-Not Reported-
D0013	Treatment Plant	City Council	srteet 12 Co. Limerick, -	WATER	TOTAL - NITROGEN	M	YES	-Not Reported-	CEN/ISO	EPA WWTP Tool V2.0

Check#	Warning	Description of the warning.
2	[Reported value]	<p>This validation examines if confidentiality has been claimed in any case.</p> <p>2.1 All the facilities for which confidentiality has been claimed and the information of the facility report field (name, company, address, postal code and city) that has been withhold.</p> <p>2.2 All the pollutant releases whose method of calculation has not been reported even if confidentiality was not claimed and all data entry for which confidentiality has been claimed but a reason has not been provided.</p> <p>2.3 All the pollutant transfers whose method of calculation has not been reported even if confidentiality was not claimed plus all data entry for which confidentiality has been claimed but a reason has not been provided.</p> <p>2.4 All the waste transfers whose method of calculation has not been reported even if confidentiality was not claimed plus all data entry for which confidentiality has been claimed but a reason has not been provided.</p>

Sample XML

```

<rsm:NationalID>D0013</rsm:NationalID>
- <rsm:PreviousNationalID>
  <rsm:NationalID>D00222</rsm:NationalID>
  <rsm:ReportingYear>2008</rsm:ReportingYear>
</rsm:PreviousNationalID>
<rsm:ParentCompanyName>City Council</rsm:ParentCompanyName>
<rsm:FacilityName>Treatment Plant</rsm:FacilityName>
- <rsm:Address>
  <rsm:StreetName>srteet</rsm:StreetName>
  <rsm:BuildingNumber>12</rsm:BuildingNumber>
  <rsm:CityName>Co. Limerick</rsm:CityName>
  <rsm:PostcodeCode></rsm:PostcodeCode>
</rsm:Address>
- <rsm:GeographicalCoordinate>
  <rsm:LongitudeMeasure>-18.67025</rsm:LongitudeMeasure>
  <rsm:LatitudeMeasure>152.6500</rsm:LatitudeMeasure>
</rsm:GeographicalCoordinate>
<rsm:RiverBasinDistrictID>IEGBNISH</rsm:RiverBasinDistrictID>
<rsm:NACEMainEconomicActivityCode>37.00</rsm:NACEMainEconomicActivityCode>
<rsm:MainEconomicActivityName>Sewerage</rsm:MainEconomicActivityName>
<rsm:CompetentAuthorityPartyName>Environmental Protection Agency</rsm:CompetentAuthorityPartyName>
<rsm:TotalIPPCInstallationQuantity>1</rsm:TotalIPPCInstallationQuantity>
<rsm:OperationHours>8760</rsm:OperationHours>
<rsm:TotalEmployeeQuantity>4</rsm:TotalEmployeeQuantity>
<rsm:NutsRegionID>IE023</rsm:NutsRegionID>
<rsm:ConfidentialIndicator>true</rsm:ConfidentialIndicator>

```

Confidentiality is claimed, but data that can be withheld due to confidentiality is still reported

Result

2.1 Facility reports claiming confidentiality

Confidentiality has been claimed for data on facility report level for the following facilities:

National ID	Facility name	Parent company	Address	Confidential	Reason for conf.	Comp. Authority
D0013	Treatment Plant	City Council	srteet 12, Co. Limerick, -	Yes	-Not reported-	Environmental Protection Agency
D0033	Cork City Waste Water Treatment Plant	Cork City Council	Carrigrenan Little Island, Co. Cork, -	Yes	OK	Environmental Protection Agency

Data that can be withheld due to confidentiality is: The name of the parent company, the name of the facility, the address of the facility. For the following facilities, one or more of these groups of data have been reported on facility report level even though confidentiality was claimed:

National ID	Facility name	Parent company	Address	Confidential	Reason for conf.	Comp. Authority
D0013	Treatment Plant	City Council	srteet 12, Co. Limerick, -	Yes	-Not reported-	Environmental Protection Agency
D0033	Cork City Waste Water Treatment Plant	Cork City Council	Carrigrenan Little Island, Co. Cork, -	Yes	OK	Environmental Protection Agency

Check#	Warning	Description of the warning.
3	<p>[PollutantCode]</p> <p>[WasteTypeCode]</p> <p>[X]</p>	This validation examines if confidentiality has been claimed in any facility and signals where by an X. This check is a aggregated view of the previous checks sorted by facilities.

Result

3. Confidentiality claims sorted by facilities

Companies subjected to reporting or Competent Authorities in Member States can decide to classify parts of the mandatory data as confidential. This validation examines if confidentiality has been claimed and signals where by an X.

The table below lists all cases where confidentiality is claimed for facility reports, pollutant releases, pollutant transfers and waste transfers respectively.

National ID	Facility Details				(3) Confidentiality			
	Facility Name	Parent Company	Address	Competent Authority	Facility Reports	Pollutant Release	Pollutant Transfer	Waste Transfer
D0013	Treatment Plant	City Council	srteet 12 Co. Limerick, -	Environmental Protection Agency	X	WATER / TOTAL - NITROGEN: X WATER / TOTAL - NITROGEN: X	TOTAL - PHOSPHORUS: X TOTAL - PHOSPHORUS: X	NON-HW / D: X
D0033	Cork City Waste Water Treatment Plant	Cork City Council	Carrirenan Little Island Co. Cork, -	Environmental Protection Agency	X			

3.2.4 Complementary Validation: Coordinates and NUTS check

Purpose: this rule checks that the coordinates of the facility are provided and if they are actually within the region reported (NUTs 3 level). The coordinates and NUTs 3 level regions are checked against EEA's Map Service.

Prerequisites:

Longitude and latitude must be reported, giving a precision of at least 500 m and referring to the geographical centre of the facility, according to the ISO 6709:1983 "Standard representation of latitude, longitude and altitude for geographic point locations".

The Region (NUTs 3) in which the facility is located has also to be reported.

The validation rule checks:

1. **Absence of coordinates** - that the field "latitude and longitude" are not empty.
2. **Absence of NUTS code** - that the field "NUTs 3" is not empty.
3. **Inconsistent location on NUTS level 3** - when NUTs 3 and coordinates elements are correct, then the coordinates provided are within the geographical polygon for the NUTs 3 reported according to the Map Service.
4. **Inconsistent location on country level** - when NUTs 3 is not provided and coordinates elements are correct, then the coordinates provided are within the geographical polygon for the reporting country according to the Map Service.
5. **Illegal/Fake NutsRegionID** - that the field "NUTs 3" is reporting according to the reference code list (http://converters.eionet.europa.eu/xmlfile/EPRTTR_Nuts.xml).

Exceptions: There are a few exceptional facilities (e.g. E-PRTR sector 1.* or 7.b - oil and gas rigs and intensive aquaculture facilities) where the coordinates can be outside of country borders and these coordinates are treated as correct and they are not validated. Additionally, for the exceptionally few facilities (e.g. E-PRTR sector 1.* or 7.b) outside country borders, reporters are allowed to report a non-officially approved NUTS III and RBD only with agreement with Commission.

Checks in this rule:

Check #	Warning	Description of the warning.
1	No correct coordinates reported	When a reported coordinates are shown in red and message 1 appears on the right, then the reported coordinates are missing or they are not in correct format.
2	NUTS Code is not reported in the XML; the provided coordinates fall into NUTS region <??###>	NUTS Code is missing in the reported XML file. The message displays the correct NUTS Code if the reported coordinates are available and they fall into some NUTS polygon.
3	The facility is located outside the reported NUTS polygon	NUTS Code is missing in the reported XML file. The message displays the correct NUTS Code if the reported coordinates are available and they fall into some NUTS polygon.
4	The facility is located outside the reported country polygon	The message is shown when coordinates are reported but NUTS code is NOT reported the National ID checks whether the facility falls in a consistent location within the reporter country polygon.
5	The reported NUTS polygon is not available in GISCO 2006. Thus the check on the reported location of this facility is disabled	The message is shown when the NUTS code reported in the XML is not present in the GISCO 2006 NUTS definition.

Sample XMLs

```
- <rsm:GeographicalCoordinate>  
  <rsm:LongitudeMeasure/>  
  <rsm:LatitudeMeasure/>  
</rsm:GeographicalCoordinate>  
<rsm:NutsRegionID>IE025</rsm:NutsRegionID>
```

1. Coordinates are missing

```
...  
- <rsm:GeographicalCoordinate>  
  <rsm:LongitudeMeasure>-18.34204</rsm:LongitudeMeasure>  
  <rsm:LatitudeMeasure>51.8245</rsm:LatitudeMeasure>  
</rsm:GeographicalCoordinate>  
<rsm:NutsRegionID/>
```

2. NUTS code is missing

```
...  
- <rsm:GeographicalCoordinate>  
  <rsm:LongitudeMeasure>-8.31478</rsm:LongitudeMeasure>  
  <rsm:LatitudeMeasure>51.8164</rsm:LatitudeMeasure>  
</rsm:GeographicalCoordinate>  
<rsm:NutsRegionID>IE0259</rsm:NutsRegionID>
```

3. The coordinates do not fall into reported NUTS level 3 polygon which is IE025

```
...  
- <rsm:GeographicalCoordinate>  
  <rsm:LongitudeMeasure>-18.34204</rsm:LongitudeMeasure>  
  <rsm:LatitudeMeasure>51.8245</rsm:LatitudeMeasure>  
</rsm:GeographicalCoordinate>  
<rsm:NutsRegionID/>
```

4. The coordinates do not fall into reported country polygon which is IE

```
...  
- <rsm:GeographicalCoordinate>  
  <rsm:LongitudeMeasure>-8.31478</rsm:LongitudeMeasure>  
  <rsm:LatitudeMeasure>51.8164</rsm:LatitudeMeasure>  
</rsm:GeographicalCoordinate>  
<rsm:NutsRegionID>IE0259</rsm:NutsRegionID>
```

5. The reported NUTS code, IE0259 is invalid since it is not available in GISCO 2006

Result

National ID	Facility Details				Nuts_Code	Longitude	Latitude	Message
	Facility Name	Parent Company	Address	Comp. Authority				
D0013	Bunlicky Waste Water Treatment Plant	Environmental Protection Agency - Limerick City Council		Environmental Protection Agency	IE023	-18.67025	152.6500	3. The facility is located outside the reported NUTS polygon;
P0004	Smithkline Beecham (Cork) Limited	Smithkline Beecham (Cork) Limited		Environmental Protection Agency	IE0259	-8.31478	51.8164	3. The facility is located outside the reported NUTS polygon; the provided coordinates fall into NUTS region IE025; 5. The reported NUTS polygon is not available in GISCO 2006. Thus the check on the reported location of this facility is disabled;
P0005	Schering-Plough (Brinny) Company	Schering-Plough (Brinny) Company		Environmental Protection Agency	IE025	-empty-	-empty-	1. No correct coordinates reported;
P0006	Novartis Ringaskiddy Limited	Novartis Ringaskiddy Limited		Environmental Protection Agency		-18.34204	51.8245	2. NUTS Code is not reported in the XML; the provided coordinates fall into NUTS region 'unknown'; 4. The facility is located outside the reported country polygon;
P0008	Leo Laboratories Limited	Leo Laboratories Limited		Environmental Protection Agency		-6.29922	53.3161	2. NUTS Code is not reported in the XML; the provided coordinates fall into NUTS region IE021;

3.2.5 Complementary Validation: Facility ID check

Purpose: this rule checks the consistency of Facility ID of reported facilities over time to ensure a univocal identification of facilities in the E-PRTR master database. The validation rule performs different checks when a facility is reported as new (reporting year = previous reporting year) or old (reporting year \neq previous reporting year).

Prerequisites: Old facilities must have a "Previous National ID" that has been actually reported in previous years (regardless the possible changes in ID). The label "PreviousNationalID" must contain the previously used ID by the concerned facility. New facilities must report as "PreviousNationalID" the reporting ID attributed to the facility and indicate as previous reporting year the current reporting year.

Checks in this rule:

Check#	Warning	Description of the warning.
1	Previous NationalID does not exist for the given previous reporting year. The facility will be considered as NEW when imported into the EPRTR-system!	The Previous National ID cannot be found in the master database for the given reporting year. This means that the previous national ID has not been reported for the given reporting year. Please, check and provide the correct

Previous National ID and/or previous reporting year.

Sample XML

```

- <rsn:PollutantReleaseAndTransferReport xsi:schemaLocation="urn:eu.com:env:prtr:data:standard:2 http://www.european-council.europa.eu/media/10000/General/PRTR/PRTR%20Data%20Standard%202%20EN.pdf" >
  <rsn:ReportingYear>2008</rsn:ReportingYear>
  <rsn:CountryID>FR</rsn:CountryID>
  <rsn:CoordinateSystemID>EPSG:4326</rsn:CoordinateSystemID>
  <rsn:RemarkText>aucune</rsn:RemarkText>
+ <rsn:CompetentAuthorityParty></rsn:CompetentAuthorityParty>
- <rsn:FacilityReport>
  <rsn:NationalID>01074121</rsn:NationalID>
  - <rsn:PreviousNationalID>
    <rsn:NationalID>01074121</rsn:NationalID>
    <rsn:ReportingYear>2006</rsn:ReportingYear>
    </rsn:PreviousNationalID>
  </rsn:FacilityReport>
  </rsn:PollutantReleaseAndTransferReport>
  
```

The previous ID cannot be found in the database

Result

National ID	Facility Details					Changes in the National ID
	Facility Name	Parent Company	Address	Year	Country Code	
E103_127	Wessens Galvanizers Ltd.	B.E. Wedge Holdings Ltd.	Tower Industrial Estate, Tower Lane - Eastleigh SO50 6NZ	2007	UK	Previous NationalID does not exist for the given previous reporting year. The facility will be considered as NEW when imported into the EPRTR-system!

Check#	Warning	Description of the warning.
2	The national ID of this facility appears more than once in the database. The import of this facility will potentially be distorted	The National ID of the facility for a given reporting year could be changed between the reporting and the correction rounds in a specific year. Please, verify the affected entries.

Sample XML

```

- <rsn:PollutantReleaseAndTransferReport xsi:schemaLocation="urn:eu.com:env:prtr:data:standard:2 http://www.european-council.europa.eu/media/10000/General/PRTR/PRTR%20Data%20Standard%202%20EN.pdf" >
  <rsn:ReportingYear>2008</rsn:ReportingYear>
  <rsn:CountryID>FR</rsn:CountryID>
  <rsn:CoordinateSystemID>EPSG:4326</rsn:CoordinateSystemID>
  <rsn:RemarkText>aucune</rsn:RemarkText>
+ <rsn:CompetentAuthorityParty></rsn:CompetentAuthorityParty>
+ <rsn:FacilityReport></rsn:FacilityReport>
+ <rsn:FacilityReport></rsn:FacilityReport>
- <rsn:FacilityReport>
  <rsn:NationalID>01115003</rsn:NationalID>
  - <rsn:PreviousNationalID>
    <rsn:NationalID>01115003</rsn:NationalID>
    <rsn:ReportingYear>2008</rsn:ReportingYear>
    </rsn:PreviousNationalID>
  <rsn:ParentCompanyName>SARL DE MONTEBUREN</rsn:ParentCompanyName>
  <rsn:FacilityName>SARL de Montburon</rsn:FacilityName>
  </rsn:FacilityReport>
  </rsn:PollutantReleaseAndTransferReport>
  
```

The NationalID is found more than once in the dataase

Result

Facility ID	Facility Details					Changes in the Facility ID
	Facility Name	Parent Company	Address	Year	Country Code	
01115003	SARL de Montburon	SARL DE MONTEURON	lieudit Montburon CONFRANCON 01310	2008	FR	The NationalID of this facility appears more than once in the Database. The import of this facility will potentially be distorted.
01163015	SARL Elevage du Bois Cochon	SARL Elevage du Bois du Cochon	Lieu-dit Monnet des Bois FOISSIAT 01340	2007	FR	The NationalID of this facility appears more than once in the Database. The import of this facility will potentially be distorted.

Check#	Warning	Description of the warning.
3	This facility is referencing to a previous national ID already used by other(s) facility(s) in the same report and same reporting year. All affected facilities will be imported as new	Two different facilities cannot have the same PreviousNationalID. In case of merge of two or more facilities, only for one will be possible to enable time series Please, verify the affected entries.

Sample XML

```

- <ism:FacilityReport>
  <ism:NationalID>01301084</ism:NationalID>
  - <ism:PreviousNationalID>
    <ism:NationalID>01301084</ism:NationalID>
    <ism:ReportingYear>2008</ism:ReportingYear>
  </ism:PreviousNationalID>
  <ism:ParentCompanyName>SARL MATHIEU FRERES</ism:ParentCompanyName>
  <ism:FacilityName>EARL Mathieu Frères</ism:FacilityName>
  + <ism:Address></ism:Address>
  + <ism:GeographicalCoordinate></ism:GeographicalCoordinate>
  <ism:RiverBasinDistrictID>FRD</ism:RiverBasinDistrictID>
  <ism:NACEMainEconomicActivityCode>01.46</ism:NACEMainEconomicActivityCode>
  <ism:MainEconomicActivityName>Raising of swine/pigs</ism:MainEconomicActivityName>
  + <ism:CompetentAuthorityPartyName></ism:CompetentAuthorityPartyName>
  <ism:ConfidentialIndicator>0</ism:ConfidentialIndicator>
  <ism:ProtectVoluntaryData>0</ism:ProtectVoluntaryData>
  + <ism:Activity></ism:Activity>
  + <ism:PollutantRelease></ism:PollutantRelease>
</ism:FacilityReport>
- <ism:FacilityReport>
  <ism:NationalID>01301084</ism:NationalID>
  - <ism:PreviousNationalID>
    <ism:NationalID>01301084</ism:NationalID>
    <ism:ReportingYear>2008</ism:ReportingYear>
  </ism:PreviousNationalID>
  <ism:ParentCompanyName>SA BOPRE</ism:ParentCompanyName>
  <ism:FacilityName>SA Bopré</ism:FacilityName>
  - <ism:Address>
    <ism:StreetName>PRESSIAT</ism:StreetName>
    <ism:CityName>PRESSIAT</ism:CityName>
    <ism:PostcodeCode>01370</ism:PostcodeCode>
  </ism:Address>

```

The PreviousNationalID of the second facility (SA BOPRE) was already used in the first Facility (SARL MATHIEUFRERES)

Result

Facility ID	Facility Details					Changes in the Facility ID
	Facility Name	Parent Company	Address	Year	Country Code	
01301084	EARL Mathieu Frères	SARL MATHIEU FRERES	Les Vernays POLLIAT 01310	2008	FR	The NationalID of this facility appears more than once in the Database. The import of this facility will potentially be distorted. This facility is referencing to a previousNationalID already used by other facility in the same report. All affected facilities will be imported as new facilities.
01301084	SA Bopré	SA BOPRE	PRESSIAT PRESSIAT 01370	2008	FR	The NationalID of this facility appears more than once in the Database. The import of this facility will potentially be distorted. This facility is referencing to a previousNationalID already used by other facility in the same report. All affected facilities will be imported as new facilities.

Check#	Warning	Description of the warning.
4	New facility with potentially incorrect previous NationalID identification. The facility will be imported as new and identified using the NationalID.	The Previous National ID is different from the National ID even if reporting year and previous reporting year are the same. The NationalID will be used then. Please, verify the entries and use the same NationalID and PreviousNationalID. <i>Note: in some cases is just a non printable character included in the generation of the XML. These characters as shown as spaces in the report. For example: Previous National ID: 'EW_EA-10228 ', NationalID: 'EW_EA-10228'.</i>

Sample XML

```
<?xml version='1.0' encoding='UTF-8' schemaLocation='urn:eu.com:env:prtr:1.0:1.0/xslt/1.0/ma
<rsml:ReportingYear>2008</rsml:ReportingYear>
<rsml:CountryID>FR</rsml:CountryID>
<rsml:CoordinateSystemID>EPSG:4326</rsml:CoordinateSystemID>
<rsml:RemarkText>aucune</rsml:RemarkText>
+ <rsml:CompetentAuthorityParty></rsml:CompetentAuthorityParty>
- <rsml:FacilityReport>
  <rsml:NationalID>051.01554</rsml:NationalID>
  - <rsml:PreviousNationalID>
    <rsml:NationalID>051.01555</rsml:NationalID>
    <rsml:ReportingYear>2008</rsml:ReportingYear>
  </rsml:PreviousNationalID>
```

Both the NationalID and PreviousYearNationalID are declared for 2008. They should be the same.

Result

Facility ID	Facility Details					Changes in the Facility ID
	Facility Name	Parent Company	Address	Year	Country Code	
054.01412	TERREAL CHAGNY	TERREAL	Rue Léon Saccard CHAGNY 71150	2008	FR	New facility with potentially incorrect PreviousNationalID identification. The facility will be imported as new and identified using the NationalID. Previous National ID: 'EW_EA-10228 ', NationalID: 'EW_EA-10228'

Check#	Warning	Description of the warning.
5	This facility is reported as new and will be imported as such	This is not an erroneous situation but it provides a list of all facilities correctly reported as new facilities. This will help the user to check the reported data. No specific action is needed.

Sample XML

```

- <!sm:PollutantReleaseAndTransferReport xsi:schemaLocation="urn:eu.com:envprtr:data:standard.2 http://www.eionet.europa.eu/schemas/eprtr/PollutantReleaseAndTransferReport_2e0.xsd">
  <!sm:ReportingYear>2008</!sm:ReportingYear>
  <!sm:CountryID>FR</!sm:CountryID>
  <!sm:CoordinateSystemID>EPSG4326</!sm:CoordinateSystemID>
  <!sm:RemarkText>aucune</!sm:RemarkText>
+ <!sm:CompetentAuthorityParty></!sm:CompetentAuthorityParty>
- <!sm:FacilityReport>
  <!sm:NationalID>054.01412</!sm:NationalID>
  <!sm:PreviousNationalID>
    <!sm:NationalID>054.01412</!sm:NationalID>
    <!sm:ReportingYear>2008</!sm:ReportingYear>
  </!sm:PreviousNationalID>
  <!sm:ParentCompanyName>TERREAL</!sm:ParentCompanyName>
  <!sm:FacilityName>TERREAL CHAGNY</!sm:FacilityName>
- <!sm:Address>
  <!sm:StreetName>Rue Léon Saccard</!sm:StreetName>
  <!sm:CityName>CHAGNY</!sm:CityName>
  <!sm:PostcodeCode>71150</!sm:PostcodeCode>
</!sm:Address>
  
```

This NationalID cannot be found in the dataase

Result

Facility ID	Facility Details					Changes in the Facility ID
	Facility Name	Parent Company	Address	Year	Country Code	
054.01412	TERREAL CHAGNY	TERREAL	Rue Léon Saccard CHAGNY 71150	2008	FR	This facility is reported as new and will be imported as such.

3.2.6 Complementary Validation: Outliers

Purpose: This validation test identifies potential outliers within reported quantities of air releases, water releases and waste transfers. The test uses 3 different methods for detecting outliers:

- 1. Check reported values against previous years top polluters by each sector** - The previous year top polluter values are parameters derived from the existing data in the E-PRTR database and they are calculated at the lower level of disaggregation that the content of the data allows. In case that no sufficient sample for statistical analysis provided for an Annex II substance/Annex I activity, a general parameter is used derived by the entries of Database at a higher level of aggregation (e.g. for all sectors reporting a substance). If there are not enough entries in the database no parameter is set and therefore the check is disabled for the concerned substance.
- 2. Check reported values against country total and pollutant thresholds** – If reported pollutant value is > 10% of the country total for the sector matching the facility and > 10,000 times threshold for the media of the reported pollutant, then the reported value is considered to be an outlier. Country total values are parameters calculated by summing up the reported quantities from the same XML file. The totals are calculated for each pollutant/waste type for 3 different mediums - air releases, water releases and waste transfers. The threshold values for the pollutants and media are available on E-PRTR website
- 3. Check reported values against country data from previous year** - This test is performed only if the previous year data is available on E-PRTR website. The reported value is indicated as potential outlier if the quantity for

the same NationalID is increased more than 1000% (waste transfers) or 200% (air and water pollutant releases) or reduced more than 90% compared to previous year data.

Prerequisites:

1. Reported quantity of air releases, water releases and waste transfer must be below the indicated parameter.
2. Pollutant threshold value is available and reported quantity is 10,000 times greater than threshold value and greater then 10 % of the country total for the sector matching country total.
3. Previous year data is publicly available and
 - a. Waste transfers: reported quantity for the same NationalID is increased more than 1000% or reduced more than 90% compared to previous year data.
 - b. Air and water releases: reported quantity for the same NationalID is increased more than 1000% or reduced more than 90% compared to previous year data.

Checks in this rule:

Check#	Warning	Description of the warning.
1	[Reported value]	<p>When a reported quantity is shown in blue and message 1 appears on the right, then the parameter set for this substance/sector has been exceeded. Therefore the reported value could be a potential outlier. The following text warning will be shown:</p> <p>The value is higher than statistically representative parameter: <parameter></p>
<p>Sample XML</p> <pre> - <rsm:PollutantRelease> <rsm:MediumCode>AIR</rsm:MediumCode> <rsm:PollutantCode>SOX</rsm:PollutantCode> <rsm:MethodBasisCode>M</rsm:MethodBasisCode> - <rsm:MethodUsed> <rsm:MethodTypeCode>OTH</rsm:MethodTypeCode> - <rsm:Designation> Princip nedisperzni infračervené absorpce ve spektrálním vlnovém rozsahu 2,5 - 8 um </rsm:Designation> </rsm:MethodUsed> <rsm>TotalQuantity unitCode="KGM">1250000000</rsm>TotalQuantity> <rsm:AccidentalQuantity unitCode="KGM">0.00</rsm:AccidentalQuantity> <rsm:ConfidentialIndicator>>false</rsm:ConfidentialIndicator> </rsm:PollutantRelease> </pre> <div style="border: 2px solid red; padding: 5px; width: fit-content; margin: 10px auto;"> <p>The reported quantity, 1,250,000 tne exceeds the threshold, which is set to 916,00 tne</p> </div>		

Result

Air Releases

801 facilities were checked. 1 out of them presented issues that have been identified.

The following table list potential outliers for air pollutant releases.

The quantity is shown in the results with the threshold on the right in warning message

Facility ID	Facility Details				Pollutant	Potential Outliers		
	Facility Name	Parent Company	Address	Comp. Authority		Tot quantity	Unit	Message
CZ49165297	Teplárna Strakonice, a.s.	Teplárna Strakonice, a.s.	Komenského 59 Strakonice 38643	Ministry of the Environment of the Czech Republic	SOX	1250000	TNE	1. The value is higher than statistically representative parameter: 918000 TNE

Check#	Warning	Description of the warning.
2	[Reported value]	<p>When a reported quantity is shown in blue and message 2 appears on the right, then the country total value for the sector matching the facility is exceeded by 10% and the threshold for the media of reported pollutant is exceeded by 10,000 times . Therefore the reported value could be a potential outlier. The following text warning will be shown:</p> <p>The value is > 10% of the country total: <countryTotal> and > 10,000 times threshold: <thresholdValue></p>

Sample XML

```

- <rsm:WasteTransfer>
  <rsm:WasteTypeCode>HWOC</rsm:WasteTypeCode>
  <rsm:WasteTreatmentCode>D</rsm:WasteTreatmentCode>
  <rsm:Quantity unitCode="TNE">21000</rsm:Quantity>
  <rsm:MethodBasisCode>C</rsm:MethodBasisCode>
  + <rsm:MethodUsed></rsm:MethodUsed>
  <rsm:ConfidentialIndicator>0</rsm:ConfidentialIndicator>
  + <rsm:WasteHandlerParty></rsm:WasteHandlerParty>
</rsm:WasteTransfer>
- <rsm:WasteTransfer>
  <rsm:WasteTypeCode>HWOC</rsm:WasteTypeCode>
  <rsm:WasteTreatmentCode>D</rsm:WasteTreatmentCode>
  <rsm:Quantity unitCode="TNE">570</rsm:Quantity>
  <rsm:MethodBasisCode>C</rsm:MethodBasisCode>
- <rsm:MethodUsed>
  <rsm:MethodTypeCode>NRB</rsm:MethodTypeCode>
- <rsm:Designation>
  National or regional binding measurement/calculation methodology prescribed by legal act for the
  </rsm:Designation>
</rsm:MethodUsed>
<rsm:ConfidentialIndicator>0</rsm:ConfidentialIndicator>
- <rsm:WasteHandlerParty>
  ...
  
```

The sum of quantities exceeds the 10% of country total and is 10,000 times higher threshold for the waste transfer type

Result

Waste Transfers

232 facilities were checked. 11 out of them presented issues. A total of 12 potential error were identified.

The following table list potential outliers for waste transfers sorted by facilities:

Facility ID	Facility Details				Potential Outliers			
	Facility Name	Parent Company	Address	Comp. Authority	Waste type	Tot. quantity	Unit	Message
103	CABB AG	CABB AG	Düngerstrasse 81 Pratteln 1 4133	BAFU	NON-HW	226.8	TNE	3. The value is > 1000% or < 90% compared to previous year value: 2271.5 TNE
115	Cimo SA	Cimo SA	Avenue de l'Île-au-Bois Monthey 1870	BAFU	HWOC	21570	TNE	2. The value is > 10% of the country total: 167349.07 TNE and > 10,000 times threshold: 2 TNE

Check#	Warning	Description of the warning.
3	[Reported value]	<p>When a reported quantity is shown in blue and message 3 appears on the right, then the reported quantity is increased more than 1000% (waste transfers) or 200% (air and water pollutant releases) or the value is reduced more than 90% compared to previous year value for the same NationalID. Therefore the reported value could be a potential outlier. The following text warning will be shown:</p> <p>The value is > 1000% / 200% or < 90% compared to previous year value: <previousYearValue></p>

Sample XML

```

- <rsm:PollutantRelease>
  <rsm:MediumCode>AIR</rsm:MediumCode>
  <rsm:PollutantCode>HCFCS</rsm:PollutantCode>
  <rsm:MethodBasisCode>M</rsm:MethodBasisCode>
- <rsm:MethodUsed>
  <rsm:MethodTypeCode>OTH</rsm:MethodTypeCode>
  <rsm:Designation>Other measurement/calculation methodology</rsm:Designation>
</rsm:MethodUsed>
<rsm>TotalQuantity unitCode="KGM">1310</rsm>TotalQuantity>
<rsm:AccidentalQuantity unitCode="KGM">0.00</rsm:AccidentalQuantity>
<rsm:ConfidentialIndicator>0</rsm:ConfidentialIndicator>
</rsm:PollutantRelease>

```

The quantity, 1.31 tne is more than 200% higher than previous year value 0.355 tne

Result

Air Releases

232 facilities were checked. 6 out of them presented issues. A total of 6 potential error were identified.

The following table list potential outliers for air pollutant releases sorted by facilities:

Facility ID	Facility Details				Potential Outliers			
	Facility Name	Parent Company	Address	Comp. Authority	Pollutant	Tot. quantity	Unit	Message
103	CABB AG	CABB AG	Düngerstrasse 81 Pratteln 1 4133	BAFU	HCFCS	1.31	TNE	3. The value is > 200% or < 90% compared to previous year value: 0.355 TNE
18	BASF Schweiz AG	BASF Schweiz AG	Klybeckstrasse 141 / Postfach Basel 4002	BAFU	HCFCS	0.025	TNE	3. The value is > 200% or < 90% compared to previous year value: 0.005 TNE

3.2.7 Complementary Validation: use of Hyphens and Zeroes

Purpose: This validation checks if some of the values are filled with a single zero (0) or hyphen character (-).

1. The **Misuse of hyphens/zeroes in Facilities** checks if any of the mandatory fields is filled with a hyphen/zero in *rsm:Facility* elements. Facility geographical coordinates are not allowed to be decimals equal to zero as well (0.00, 0.0)
2. The **Misuse of hyphens/zeroes in Competent Authorities** checks if any of the mandatory fields is filled with a hyphen/zero in *rsm:CompetentAuthorityParty* elements.

Checks in this rule:

Check#	Warning	Description of the warning.
1	[Facility Details] [Invalid field name(s)]	Field names which content is only a hyphen or zero are listed in red

Sample XML

```

<rsm:CompetentAuthorityPartyName>Umweltbundesamt2</rsm:CompetentAuthority
▼<rsm:ProductionVolume>
  <rsm:ProductName>product</rsm:ProductName>
  <rsm:Quantity unitCode="GWH">2130</rsm:Quantity>
</rsm:ProductionVolume>
<rsm:TotalIPPCInstallationQuantity>2</rsm:TotalIPPCInstallationQuantity>
<rsm:OperationHours>7816</rsm:OperationHours>
<rsm:TotalEmployeeQuantity>68</rsm:TotalEmployeeQuantity>
<rsm:NutsRegionID>DE22A</rsm:NutsRegionID>
<rsm:ConfidentialIndicator>>false</rsm:ConfidentialIndicator>
<rsm:ProtectVoluntaryData>>false</rsm:ProtectVolun
▼<rsm:Activity>
  <rsm:RankingNumeric>1</rsm:RankingNumeric>
  <rsm:AnnexIAActivityCode>-</rsm:AnnexIAActivityCode>
</rsm:Activity>
▼<rsm:Activity>
  <rsm:RankingNumeric>2</rsm:RankingNumeric>
  <rsm:AnnexIAActivityCode>0</rsm:AnnexIAActivityCode>
</rsm:Activity>

```

Illegal field values

Result

1. Misuse of hyphens/zeroes in Facilities

The test failed!

National ID	Facility Details				ActivityElements	PollutantRelease		PollutantTransfer	WasteTransfer	Elements with Hyphens or Zeroes
	Facility Name	Parent Company	Address	Comp. Authority		Medium/Pollutant Code	Elements			
no-conf				Umweltbundesamt2	AnnexActivityCode -1 AnnexActivityCode -2	WATER - - LAND - CO2	Elements PollutantCode MethodBasisCode Elements MethodBasisCode	No issues found	No issues found	LongitudeMeasure

Check#	Warning	Description of the warning.
2	[Competent Authority Details] [Invalid name(s)] field	Field names which content is only a hyphen or zero are listed in red

Sample XML

```

<rsm:CompetentAuthorityParty>
  <rsm:Name>Umweltbundesamt</rsm:Name>
  <rsm:Address>
    <rsm:StreetName>Wörlitzer Platz</rsm:StreetName>
    <rsm:BuildingNumber>1</rsm:BuildingNumber>
    <rsm:CityName>Dessau-Roßlau</rsm:CityName>
    <rsm:PostcodeCode>-</rsm:PostcodeCode>
  </rsm:Address>
  <rsm:TelephoneCommunication>
    <rsm:CompleteNumberText>+49 1234567-8900</rsm:CompleteNumberText>
  </rsm:TelephoneCommunication>
  <rsm:FaxCommunication>
    <rsm:CompleteNumberText>-</rsm:CompleteNumberText>
  </rsm:FaxCommunication>
  <rsm:EmailCommunication>
    <rsm:EmailURIID>-</rsm:EmailURIID>
  </rsm:EmailCommunication>
  <rsm:ContactPersonName>Peter Kaufmann</rsm:ContactPersonName>
</rsm:CompetentAuthorityParty>
<rsm:CompetentAuthorityParty>
  <rsm:Name>Umweltbundesamt</rsm:Name>
  <rsm:Address>
    <rsm:StreetName>Wörlitzer Platz 1</rsm:StreetName>
    <rsm:BuildingNumber>1</rsm:BuildingNumber>
    <rsm:CityName>Dessau-Roßlau</rsm:CityName>
    <rsm:PostcodeCode>0</rsm:PostcodeCode>
  </rsm:Address>
  </rsm:CompetentAuthorityParty>

```

Hyphens and zeroes

Result

2. Misuse of hyphens/zeroes in Competent Authorities

The test failed!

Name	Address	Phone Number	E-mail Address	Elements with Hyphens or Zeroes
Umweltbundesamt	Wörlitzer Platz	+49 1234567-8900	-	Address_PostcodeCode FaxNumber
Umweltbundesamt	Wörlitzer Platz 1	+49 1234567-8900	peter.kaufmann@uba.de	Address_PostcodeCode

4 PART III: THE E-PRTR CONVERSION TOOL

The purpose of the E-PRTR Conversion tool is to allow the Member States to create the XML file without any knowledge of XML formats and standards. However database knowledge (including MS Access) and advanced data transformation skills are needed to use the conversion tool.

4.1 Computer Requirements

The E-PRTR Conversion tool is implemented in Microsoft Access and requires Microsoft Access 2003 or 2007 to be installed prior to installation of the conversion tool. The conversion tool does not run with older versions of Access.

4.2 Installation / uninstallation

4.2.1 Installation

The E-PRTR Conversion tool can be downloaded from the URL below:

<http://www.eionet.europa.eu/schemas/eprtr/conversiontool>

Download the installation program that corresponds to your Access version. Run the installation and follow the instructions in the installation program.

4.2.2 Uninstallation

The E-PRTR Conversion tool has to be uninstalled from the Control Panel. (Normally it can be opened from the Windows Start menu)

4.3 Principle for conversion

The E-PRTR Conversion tool generates an XML file based on the data added to the database. A specific version of the conversion tool will generate an XML file corresponding to a specific version of the E-PRTR XML schema.

This means that any change in the E-PRTR XML schema requires the E-PRTR Conversion tool to be updated. It should be noticed that unlike the E-PRTR Validation tool an automatic check for newer versions will not be performed when running the conversion tool.

The conversion tool does not include any validation of the data. This must be done subsequently using the E-PRTR Validation tool, as described in section 2.

4.4 Using the E-PRTR Conversion tool

The E-PRTR Conversion tool is started from the start menu (Programs -> The European Commission -> E-PRTR Conversion tool).

If you are using Microsoft Access 2007, a security warning might occur (See Figure 7). In this case you must close the form, click the “Options...” button, select “Enable this content” and click “Ok”. Then reopen the form (frmMain).

The generation of an XML file consists of two steps:

1. Add data to the database (See section 4.4.1)
2. Export data to XML (See section 4.4.2)



Figure 6 The E-PRTR Conversion tool

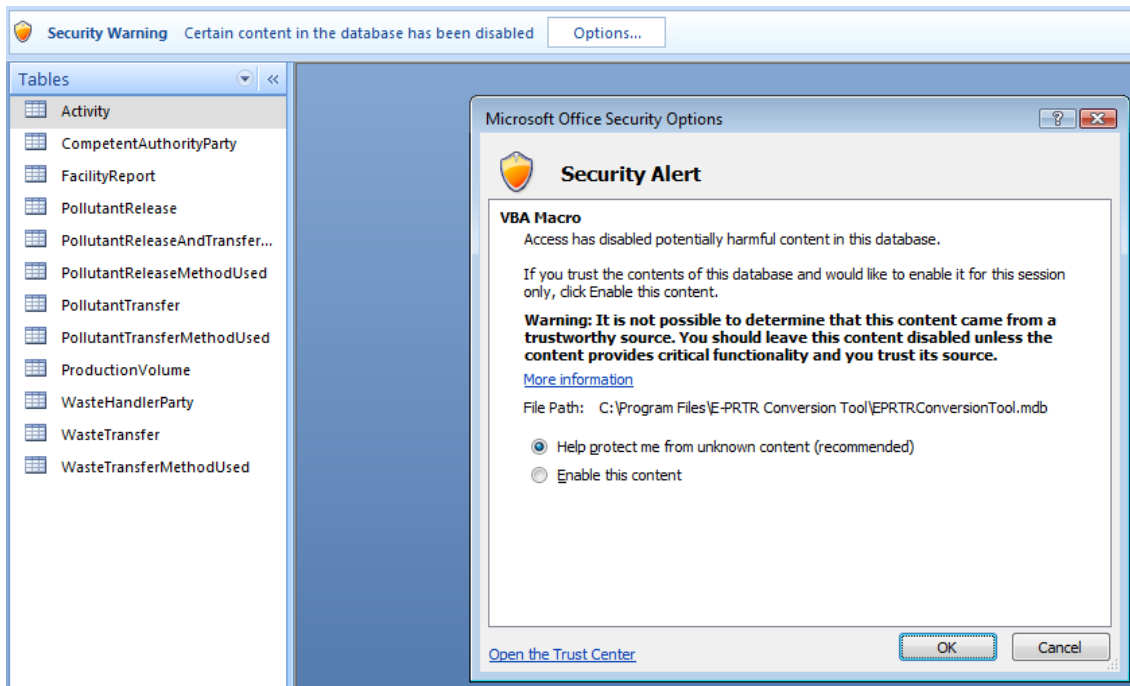


Figure 7 Security Warning in Access 2007

4.4.1 Add data to the database

Before an XML file can be generated, data from the national PRTR must be added to the database. This requires knowledge of MS Access and advanced data transformation skills, as the Conversion tool does not include any forms for entering the data.

The data must be added by making an export from the national PRTR into the tables of the Conversion tool. The data structure of the database is described in section 4.5. The actual steps needed to import data depend on the structure of the national PRTR. For that reason this can not be described in any detail.

Alternatively data can be manually entered directly into the tables.

The database can be cleared by clicking the “Clear DB” button (see Figure 6).

4.4.2 Export data to XML

To generate an XML file based click the “Export data to xml” button (see Figure 6) and select where to save the XML file. The system generates the XML file based on the data added to the database.

As previously mentioned the conversion tool does not include any validation of the data. Therefore the generated XML file must be validated using the E-PRTR Validation tool (See section 2).

If the validation results in errors, it is important to verify whether the error exists in the national PRTR as well. If this is not the case, data might be imported wrongly into the conversion tool database. As mentioned in 2.4.2 **it is very important that the data are corrected in the national PRTR, not just in the E-PRTR conversion tool database.**

4.5 Data structure

The structure of the E-PRTR Conversion tool database is shown in Figure 8. Required fields are shown as bold. Primary keys are shown underlined.

The tables in the database do not have any relations. This ensures that data can be inserted into the database in any order without violating foreign key constraints. Still the logical relations have to be present in the data. E.g. there must not be any pollutant releases without a relation to a facility report. These relations are verified as part of the generation of the XML file.

The tables in the database correspond with a few deviations to the elements of the XML file described in section 3. The deviations are described in the following.

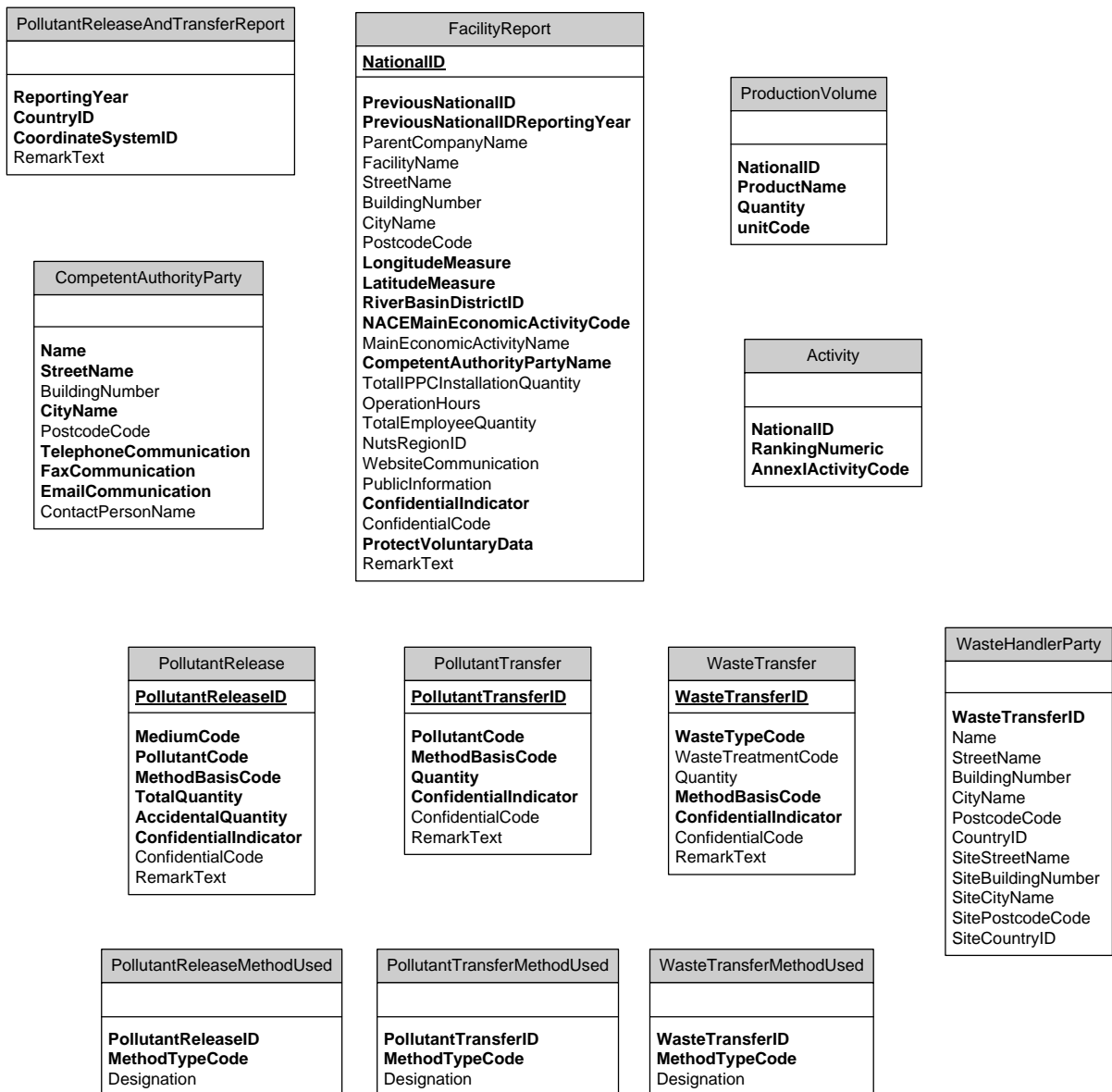


Figure 8 Structure of the E-PRTR Conversion tool database

4.5.1 PollutantReleaseAndTransferReport table

The *PollutantReleaseAndTransferReport* table corresponds to the PollutantReleaseAndTransferReport element described in section 3.1.3.

Only one record must be entered in this table. This is verified as part of the generation of the XML file.

4.5.2 FacilityReport table

The *FacilityReport table* corresponds to the FacilityReport element described in section 3.1.4 with the deviations shown below.

It should be noticed that the production volume is entered in a separate table as described in section 4.5.3.

Column	Description
PreviousNationalID	Corresponds to the NationalID element of the PreviousNationalID element (section 3.1.4)
PreviousNationalIDReportingYear	Corresponds to the ReportingYear element of the PreviousNationalID element (section 3.1.4)
StreetName	Corresponds to the StreetName element of the Address element (section 3.1.4)
BuildingNumber	Corresponds to the BuildingNumber element of the Address element (section 3.1.4)
CityName	Corresponds to the CityName element of the Address element (section 3.1.4)
PostcodeCode	Corresponds to the PostcodeCode element of the Address element (section 3.1.4)
LongitudeMeasure	Corresponds to the LongitudeMeasure element of the GeographicalCoordinate element (section 3.1.4)
LatiitudeMeasure	Corresponds to the LatiitudeMeasure element of the GeographicalCoordinate element (section 3.1.4)
WebsiteCommunication	Corresponds to the WebsiteURIID element of the WebsiteCommunication element (section 3.1.4)

4.5.3 ProductionVolume table

The *ProductionVolume table* corresponds to the ProductionVolume element of the FacilityReport element described in section 3.1.4 with the deviations shown below:

The ProductionVolume element is voluntary. If data are not to be reported, no records must be entered in the ProductionVolume table. If data are to be reported, all columns must be filled.

Column	Description
NationalID	Must correspond to the NationalID of the FacilityReport to which the ProductionVolume belongs. Required.
unitCode	Corresponds to the attribute <i>unitCode</i> of the Quantity element of the ProductionVolume element (section 3.1.4)

4.5.4 Activity table

The *Activity table* corresponds to the Activity element described in section 3.1.5 with the following deviations:

Column	Description
NationalID	Must correspond to the NationalID of the FacilityReport to which the Activity belongs. Required.

4.5.5 PollutantRelease table

The *PollutantRelease table* corresponds to the PollutantRelease element described in section 3.1.6 with the deviations shown below.

In order to be able to make the correct logical relations a unique identification of each record must be given in the PollutantReleaseID column. As an example this could be generated from the NationalID, MediumCode and PollutantCode since a pollutant is only allowed to be reported once per medium for a given facility.

Column	Description
PollutantReleaseID	A unique identification of the record. For instance a combination of NationalID, MediumCode and PollutantCode. Required.
NationalID	Must correspond to the NationalID of the FacilityReport to which the PollutantRelease belongs. Required.
TotalQuantityUnitCode	Corresponds to the attribute <i>unitCode</i> of the TotalQuantity element (section 3.1.6)
AccidentalQuantityUnitCode	Corresponds to the attribute <i>unitCode</i> of the AccidentalQuantity element (section 3.1.6)

In order to be able to make the correct logical relations a unique identification of each record must be given in the PollutantReleaseID column. This could be generated from the NationalID, MediumCode and PollutantCode or it could be a consecutive number.

4.5.6 PollutantTransfer table

The *PollutantTransfer table* corresponds to the PollutantTransfer element described in section 3.1.7 with the deviations shown below.

In order to be able to make the correct logical relations a unique identification of each record must be given in the PollutantTransferID column. As an example this could be generated from the NationalID and PollutantCode since a pollutant is only allowed to be reported once for a given facility.

Column	Description
PollutantTransferID	A unique identification of the record. For instance a combination of NationalID and PollutantCode. Required.
NationalID	Must correspond to the NationalID of the FacilityReport to which the PollutantTransfer belongs. Required.
QuantityUnitCode	Corresponds to the attribute <i>unitCode</i> of the Quantity element (section 3.1.7)

4.5.7 WasteTransfer table

The *WasteTransfer table* corresponds to the WasteTransfer element described in section 3.1.8 with the deviations shown below.

In order to be able to make the correct logical relations a unique identification of each record must be given in the WasteTransferID column. As an example this could be generated from the NationalID, WasteTypeCode and WasteTreatmentCode since this combination typically will be unique.

However, in some cases there might be more than one record with a specific type and treatment for a given facility. This will be the case if the waste is transferred to more than one waste handler. Also if confidentiality is claimed the WasteTreatmentCode might be withheld. In this case a consecutive generated number will ensure uniqueness.

It will not be possible to add a record with a WasteTransferID, if another record with the same identification has already been entered.

Column	Description
WasteTransferID	A unique identification of the record. For instance a combination of NationalID, WasteTypeCode and WasteTreatmentCode or a consecutive number. Required.
NationalID	Must correspond to the NationalID of the FacilityReport to which the WasteTransfer belongs. Required.
QuantityUnitCode	Corresponds to the attribute <i>unitCode</i> of the Quantity element (section 3.1.8)

4.5.8 WasteHandlerParty table

The *WasteHandlerParty table* corresponds to the WasteHandlerParty element described in section 3.1.9 with the deviations shown below.

Column	Description
WasteTransferID	Must correspond to the WasteTransferID of the WasteTransfer to which the WasteHandlerParty belongs. Required.
StreetName	Corresponds to the StreetName element of the Address element (section 3.1.9)
BuildingNumber	Corresponds to the BuildingNumber element of the Address element (section 3.1.9)
CityName	Corresponds to the CityName element of the Address element (section 3.1.9)
PostcodeCode	Corresponds to the PostcodeCode element of the Address element (section 3.1.9)
CountryID	Corresponds to the CountryID element of the Address element (section 3.1.9)
SiteStreetName	Corresponds to the StreetName element of the SiteAddress element (section 3.1.9)
SiteBuildingNumber	Corresponds to the BuildingNumber element of the SiteAddress element (section 3.1.9)
SiteCityName	Corresponds to the CityName element of the SiteAddress element (section 3.1.9)
SitePostcodeCode	Corresponds to the PostcodeCode element of the SiteAddress element (section 3.1.9)
SiteCountryID	Corresponds to the CountryID element of the SiteAddress element (section 3.1.9)

4.5.9 PollutantReleaseMethodUsed table

The *PollutantReleaseMethodUsed table* corresponds to the MethodUsed elements of the PollutantRelease element described in section 3.1.6 and 3.1.10 with the deviations shown below.

Column	Description
PollutantReleaseID	Must correspond to the PollutantReleaseID of the PollutantRelease to which the PollutantReleaseMethodUsed belongs. Required.

4.5.10 PollutantTransferMethodUsed table

The *PollutantTransferMethodUsed* table corresponds to the MethodUsed elements of the PollutantTransfer element described in section 3.1.7 and 3.1.10 with the deviations shown below.

Column	Description
PollutantTransferID	Must correspond to the PollutantTransferID of the PollutantTransfer to which the PollutantTransferMethodUsed belongs Required.

4.5.11 WasteTransferMethodUsed table

The *WasteTransferMethodUsed* table corresponds to the MethodUsed elements of the WasteTransfer element described in section 3.1.8 and 3.1.10 with the deviations shown below.

Column	Description
WasteTransferID	Must correspond to the WasteTransferID of the WasteTransfer to which the WasteTransferMethodUsed belongs. Required.

4.5.12 CompetentAuthorityParty table

The *CompetentAuthorityParty* table corresponds to the CompetentAuthorityParty element described in section 3.1.11 with the deviations shown below.

Column	Description
NationalID	Must correspond to the NationalID of the FacilityReport to which the Activity belongs. Required.
StreetName	Corresponds to the StreetName element of the Address element (section 3.1.11)
BuildingNumber	Corresponds to the BuildingNumber element of the Address element (section 3.1.11)
CityName	Corresponds to the CityName element of the Address element (section 3.1.11)
PostcodeCode	Corresponds to the PostcodeCode element of the Address element (section 3.1.11)
TelephoneCommunication	Corresponds to the CompleteNumberText element of the TelephoneCommunication element (section 3.1.11)
FaxCommunication	Corresponds to the CompleteNumberText element of the FaxCommunication element (section 3.1.11)
EmailCommunication	Corresponds to the EmailURIID element of the EmailCommunication element (section 3.1.11)

5 REFERENCES

- [1] Guidance Document for the implementation of the European PRTR, European Commission, 31 May 2006.
Available at <http://eper.eea.europa.eu/eper/Gaps.asp>

6 FURTHER INFORMATION AND COMMENTS

Questions and comments can be sent to the functional mailbox:

ENV-PRTRCOMMUNITY@ec.europa.eu

Please indicate your Member State, the page and the paragraph the comment/question refers to and, if possible, the suggested proposal to solve the problem according to the template below.

Member State	Page	Par	Comment/Question	Proposed solution/s	COM
UK	3	3.2.1			

7 APPENDIX 1: E-PRTR XML FORMAT COMPARED TO GUIDANCE DOCUMENT

This appendix lists the differences between the E-PRTR XML format as described in section 3 and the Guidance Document [1].

Report

The XML format for the reported data on report level is described in section 3.1.3 of this document and in the Regulation Annex III (See the Guidance Document, Appendix 1).

The country reporting is reported by a code (*CountryID*) on report level. This replaces the reporting of the country for each facility.

A mandatory field for indicating the coordinate system used for reporting of coordinates have been introduced on report level (*CoordinateSystemID*)

A voluntary field for giving remarks has been introduced on report level (*RemarkText*)

Identification of the facility

The XML format for the reported data of a facility is described in section 3.1.4 of this document and in section 1.1.6 of the Guidance Document.

A mandatory field for reporting of changes in the national identification of the facility has been introduced (*PreviousNationalID*).

A field for voluntary reporting of the NUTS code of the facility has been introduced (*NutsRegionID*)

The country of the facility is not reported. The country has been moved to report level.

“The Text field for textual information...” has been replaced by three fields:

- A voluntary field for the web address of the facility (*WebsiteCommunication*)
- A voluntary field for textual information to be published on the web-site (*PublicInformation*)
- A voluntary field for textual information that will not be published on the web-site (*RemarkText*)

A mandatory field for indicating that voluntary data can not be published on the web-site has been introduced (*ProtectVoluntaryData*).

Activities

The XML format for the reported data of activities is described in section 3.1.5 of this document and in section 1.1.7 of the Guidance Document.

The E-PRTR activity codes consist of a number from 1 to 9 and a letter from (a) to (g). For some activities, there is a further sub-division from (i) to (xi). It has been made possible (but not required) to report activities on this sub-division level.

Releases to air, water and land

The XML format for the reported data of releases of pollutants is described in section 3.1.6 of this document and in section 1.1.8 of the Guidance Document.

A mandatory field to indicate the medium of the release (air, water, land) has been introduced (*MediumCode*).

The identification of the reported pollutant is reported by a code (*PollutantCode*) instead of the Annex II number and name.

When claiming confidentiality the group of pollutant is reported by a code (*PollutantCode*) instead of the group name.

Reporting of quantities must follow the number format described in section 3.1.2.

Releases below thresholds can be voluntary reported.

A voluntary field for giving remarks (e.g. on reasons for confidentiality) has been introduced (*RemarkText*)

Off-site transfers of pollutants in waste water

The XML format for the reported data of off-site transfers of pollutants in waste water is described in section 3.1.7 of this document and in section 1.1.9 of the Guidance Document.

The XML format for transfers in waste water differs from the Guidance Document in the same way as reporting of releases of pollutants described above.

For transfers in waste water the accidental quantity can not be reported. This complies with the Regulation Annex III (See the Guidance Document, Appendix 1) but differs from the example in the Guidance Document section 1.1.9, table 9.

Off-site transfers of waste

The XML format for the reported data of off-site transfers of waste is described in section 3.1.8 of this document and in section 1.1.10 of the Guidance Document.

A mandatory field to indicate type of waste transfer (has been introduced (*WasteTypeCode*). The waste type also indicates if the waste is transferred to other countries or not.

Reporting of quantities must follow the number format described in section 3.1.2.

Releases below thresholds can be voluntary reported.

A voluntary field for giving remarks (e.g. on reasons for confidentiality) has been introduced (*RemarkText*)

For hazardous waste outside the country data about the recoverer/disposer must be reported. The XML format for this information is described in section 3.1.9 of this document.

The address of the recoverer/disposer as well as the address of the actual recoverer/disposer has been split into five fields: street name, building number, city, postal code and country. The identification of the country is reported by a code (*CountryID*).

Reporting of Methods

The XML format for the reported data of methods used in determination of quantities is described in section 3.1.10 of this document and in section 1.1.1 of the Guidance Document.

The reporting of the calculation or measurement method used for determination of quantities of is done in two fields: *MethodTypeCode* and *Designation* as illustrated in The Guidance Document section 1.1.11.5, table 14. However the code list does not contain codes for each internationally approved method. Instead the following codes have been introduced: CEN/ISO, ETS, IPCC and UNECE/EMEP. The actual method used must be reported in the *Designation* field.

Authorities

The XML format for the reported data of competent authorities is described in section 3.1.11 of this document and in section 1.2.2 of the Guidance Document.

The reporting of the contact information for the relevant authorities has been moved from facility level to report level (*CompetentAuthorityParty*). Each facility must still reference the authority as described in section 3.1.4.

Voluntary fields for reporting the postal code (*PostcodeCode*) and the name of a contact person (*ContactPersonName*) have been introduced.

Confidentiality of Information

The claiming of confidentiality is described in section 3.1.1 of this document and in section 1.2.4 of the Guidance Document.

Confidentiality can be claimed on the following levels:

- Facility
- Releases of pollutants to air, water and land
- Off-site transfer of pollutants in waste water
- Off-site transfer of waste

A mandatory field for indicating that confidentiality is claimed has been introduced on the four levels listed above (*ConfidentialIndicator*). Notice that the specific confidential data should be withheld.

When claiming confidentiality, the reason must be identified by a code (*ConfidentialCode*) instead of plain text.

Code lists

The codes to use in reporting can be found at the URL below.

<http://www.eionet.europa.eu/schemas/eprtr/listOfValues>

The following codes can not be found in the Guidance Document:

Code list	Description
Confidentiality	Reasons for confidentiality
Coordinate System	Coordinate systems
Country	Countries
Medium	Medias for releases of pollutants (air, water, land)
Pollutant	Pollutant and pollutant groups. The codes from EPER have been re-used as far as possible.
Waste Type	Types of off-site transfer of waste
Unit	Unit codes for quantities
NACE Activity	NACE codes
NUTS Region	NUTS codes
River Basin District	River basin districts

The following codes have been changed with respect to the Guidance Document:

Code list	Description
Method Type	Types of methods used for calculation/measurement according to the Guidance Document section 1.1.11.5. The list has been expanded with codes for internationally approved methods and weighing.